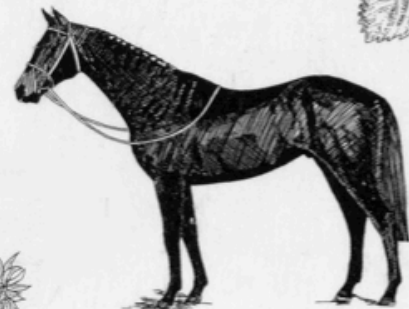


What's on in Crudwell

Issue 56 - 3 July 2020





Tel: 01666 577739

tobygregory@aol.com wheatsheafcrudwell.co.uk

Take away service

We will be offering a limited takeaway service until further notice.

Please ring 01666 577739 or

Email tobygregory@aol.com

Available:

Mondays, Wednesdays, Fridays and Saturdays

5.30pm until 7.00pm

Order early to avoid disappointment!

Menu choices From £8.00

Pepperoni or Margherita approx 12" Pizza

6oz Cheese burger with chips

Breaded Scampi and chips

Chicken and bacon Caesar salad

Beer battered cod and chips

Chicken Curry with rice

Beef lasagne with chips

Vegetarian option available

Desserts (to be heated at home) From £4.00

Ginger sponge with custard

Chocolate brownie

Fresh eggs, and Cider, Beer and Lager bottles.

Birra Moretti

Thatchers: Vintage, Haze, Katy, Gold

Old Speckled Hen

Cash or card payments

Deliveries by arrangement

See www.wheatsheafcrudwell.co.uk for updates

Suspended

Monday night: Freshly battered cod & chips

£9.00 5.30-7pm

Monday - Friday: Two course steak supper

£13.50 5.30-8pm

Roast Sunday lunch with free dessert

£13.50 12.00-2pm

All offers subject to availability. Closed all day on Tuesdays

Contents

Items of Interest	Page 3
Crudwell Pre-School	Page 3
Not the Crudwell Bike Ride	Page 4
Parish Council Report	Page 4 and 5
Crudwell Neighbourhood Plan Important Announcement	Page 6
Zoom Bible Study	Page 6
Braydon Brook Benefice Services and Other Activities	Page 7
Malmesbury U3A	Page 7
Village Hall	Page 8
Village and Local Organisations	Page 8
Advertisements	Page 2 and 9

Items of Interest

There is important news in this issue about the Neighbourhood Plan consultation; it is very important that we all contribute to this by making our views known. This will help to ensure the plan really represents how we want the village to develop rather than have inappropriate development imposed upon us.

Other items include the latest from the Pre-School and the Not the Crudwell Bike Ride. The Parish Council has provided its usual report including notification of the next virtual meeting on 7 July. There is also information on church services and activities in July and an item from Malmesbury U3A.

Do contact us if you want to provide a contribution to What's on. The next copy date is noon on 16 July. Stay safe and well.

Best Wishes

David and Jules

d_m_mitcham@yahoo.co.uk jules.burton@rocketmail.com.

Crudwell Pre-School

We have had an amazing last few weeks of term. The children came back to Pre-School really happily and it was a joy to see their excitement when seeing their friends and teachers again.

We had fun with our miniature sports day, leavers ceremony and end of year disco and spent a lot of time playing and learning in the garden and on the field.

12 of our Pre-School family are leaving to go to Primary School, we will miss them, wish them lots of love and luck and look forward to hearing about their new chapter at Primary.

We are really looking forward to welcoming all children back in September and have also opened our register ready for September. If you are interested in sending your child to Crudwell Pre-School please don't hesitate in contacting me (Cathy) on 07986622191 or info@crudwellpreschool.co.uk

Cathy and Barbara

(Crudwell Pre-school (Charity Reg. No. 1037681) Crudwell Village Hall – Monday, Wednesday and Fridays - from 9am to 3pm for 2 to 5 years old.)

Not the Crudwell Bike Ride

If there is one thing to take away from 'Not the Crudwell Bike Ride' it is that the children of Crudwell School are AMAZING!!!!

After 30 days of cycling they managed to cover 5,007 miles completing a European tour including cities such as Paris, Amsterdam, Prague, Rome, Budapest, Athens and back to Marseille. They have cycled in pouring rain, scorching sunshine and 35mph winds, there have been crashes and falls but they did not give up; they kept pedalling. Some learning to ride a bike for the first time, some developing from nervous riders to being able to ride 12 miles in a single ride and some riding everyday and covering 500, 600 or even 700 miles in the month.

We have also had a fantastic team of adult and secondary riders. The whole school community has covered 11,867 miles, further than London to Sydney!

Thank you to everyone who has supported the fundraising effort. If you have not yet done so you are still able to donate at: <https://www.gofundme.com/f/not-the-crudwell-bike-ride>

Currently the total stands at £3,395 which is more than double the initial target 😊

Details of distance awards to follow shortly and individual distance certificates will be emailed out by the school office. We will do sponsorship certificates a bit later in July to give time for any last donations to come in.

A massive congratulations to everyone who participated, every single one of you should be proud of your achievements, we certainly are! We look forward to signing you all for the school team when the proper Crudwell Bike Ride returns next year!

Website: <https://notthecrudwellbikeride.co.uk/>

Sponsorship page: <https://www.gofundme.com/f/not-the-crudwell-bike-ride/donate>

Tristan and Gail Stevens

Crudwell Parish Council Report 2 July

The Parish Council continues to hold virtual meetings the next of which will take place on the 7th July 2020 at 7:00pm. You are, if you wish able to join this meeting remotely via Zoom.

To join the Zoom Meeting visit: <https://zoom.us/j/96077687729?pwd=UjlvYzJZQnRlSk51aGMvV1hjeUVBQT09>

Meeting ID: 960 7768 7729 Password: 1DVryw

The agenda and instructions on how to take part will also be made available on the PC website in due course at: <http://www.crudwell-pc.gov.uk/>

Should parishioners have specific issues they can contact the parish clerk at parish.clerk@crudwell-pc.gov.uk or Chairman peter.gilchrist@crudwell-pc.gov.uk (phone 577615.) The my-Crudwell website and mailing list developed with Council support at: <http://www.my-crudwell.org/category/news/covid-19-news/> has links to many local services and provides access to this on-line What's On in Crudwell (WOIC) journal page which has an average of 140 reads per publication. The [my-Crudwell.org](http://www.my-crudwell.org) site also has links to the excellent Street Leaders support network and a my-Crudwell mailing list to keep you informed of developments and receive access to WOIC online publications which are currently two weekly. You can join the my-Crudwell mailing list at: www.my-Crudwell.org.

Wiltshire Council has commenced the final consultation on the Crudwell Neighbourhood Plan, see the Neighbourhood Plan section in this edition for details. The Street Leaders have also now volunteered their services to distribute informative Neighbourhood Plan flyers to those who may be unable to access the information on line.

Wiltshire Council dismiss lockdown suggestions

We have dismissed suggestions the county could be one of the next locations in the country to go into lockdown. Media reports yesterday (30 June) had stated there had been a recent weekly increase of new cases in the county of 300%. However this actually equates to just an increase from one to four new cases.

There has been a total of 550 confirmed COVID-19 cases in the Wiltshire Council area, still comparatively low nationally, and the South West remains the lowest ranked region for cases. We also have the sixth lowest rate of cases per 100,000 resident population with 110.4 cases per 100,000. This data is taken from the Public Health Coronavirus Case website.

Your views sought on plans to reopen library services safely

We are seeking your views to help with planning for reopening library services safely in the county during the COVID-19 pandemic. The library service in Wiltshire was temporarily closed due to the COVID-19 pandemic on 20 March.

The existing eBooks, eMagazines and eAudio service continues providing access to reading material, and on 27 March a new service launched via Facebook offering rhyme times, tea and chat, bedtime stories and online book groups. At the start of June, a Home Library service was launched, serving library members shielding and without digital access to download books; this service is currently used by approximately 100 people. The online library content produced since lockdown has so far generated more than 83,000 views and we appreciate everyone's support.

To make sure the library services the council provides meet your needs safely and are as innovative in their delivery as possible, we would like to hear your ideas and feedback on how to reopen the services, so we can shape a service that suits you during this time.

During this challenging time the council has to manage its resources carefully and has put forward three possible options for how the service might operate during the COVID-19 pandemic. People are also being encouraged to provide their own ideas to help the us deliver the most appropriate service in the circumstances and within the council's current financial resources.

The possible options take into account COVID-19 guidelines and social distancing measures, resources available, meaning not all libraries will be able to initially reopen and there will be a partial and phased reopening of library services.

A four-week public consultation is now underway. Hard copies will be made available at County Hall, Trowbridge; Monkton Park, Chippenham; and Bourne Hill, Salisbury. The consultation closes on 26 July 2020.

Guidance for marriages and civil partnerships

From Saturday 4 July, marriages and civil partnerships of more than 30 people will be permitted but only in certain public places as set out in law. This will include all licensed venues where legal marriage and civil partnership ceremonies can take place. However, it is strongly advised that numbers are restricted to 30 for public health reasons. Those operating venues following COVID-19 secure guidelines should take additional steps to ensure the safety of the public and prevent large gatherings from taking place.

Wiltshire Wellbeing Hub hours have changed

Since it was set up at the end of March, the hub has been open seven days a week to provide assistance to vulnerable people during the COVID-19 situation. This was then reduced to six days a week at the beginning of June. However, to reflect a reduction in emails and calls to its hotline, the hub will now operate from 9-5pm Monday to Friday and will be closed at weekends. Outside of these hours, the emergency duty service will be in place as usual.

Time to renew or sign up for garden waste collections

Households that pay to receive garden waste collections will need to renew their subscription by 14 August. New customers can also sign up to receive this service. The cost of having garden waste collected will be £50 per bin for the year.

Current garden waste subscriptions expire on 30 June 2020, but due to COVID-19 renewals were delayed this year and garden waste bins displaying a red 2019/20 bin sticker will continue to be emptied until 31 August.

You can renew or sign up to receive garden waste collections online. You don't need to contact us if you do not wish to renew.

Peter Gilchrist, Chair, Crudwell Parish Council

Crudwell Neighbourhood Plan Important Announcement 2 July 2020

Further to our recent update we can now confirm that Wiltshire Council have now commenced the final consultation (called Reg 16) on the Crudwell Neighbourhood Plan. The consultation period will run for eight weeks commencing late June until 5pm on the 24th August 2020. The Neighbourhood Plan document set is available for you to access on the internet, or by printed copy from Wiltshire Council. Although this consultation and following independent examination have now been authorised the Referendum when you will be asked to vote for the plan in order that it can be "made" will not take place until next year due to Government Covid 19 restrictions.

It is very important though that you are aware of this consultation and make any representations which you wish to. The plan, when made, will allow us in Crudwell to determine the pace and scale of future developments and to influence their location, design and affordability. Failure to achieve a made plan could again make us vulnerable to speculative planning applications and developments over which we have little control.

Where to view the Plan

A copy of the submitted Plan, along with the other supporting documents, is available to review in the following ways:

- view online at <https://consult.wiltshire.gov.uk/portal/>
- request a printed copy from Wiltshire Council by emailing: neighbourhoodplanning@wiltshire.gov.uk or calling 01225 713598 or 770354.
- from the Parish Clerk at: parishclerk@crudwell-pc.gov.uk. The consultation period ends at 5pm on Monday 24th August.

How to submit your comments

Once you have viewed the Plan, any comments need to be sent to Wiltshire Council by emailing: neighbourhoodplanning@wiltshire.gov.uk or you can leave your comments on Wiltshire Council's consultation portal here: <https://consult.wiltshire.gov.uk/portal/>

A flyer from the Steering Group giving a brief overview of the main plan policies is available on the internet at my-Crudwell.org and copies are available to those not on the internet via your Street Leaders or from the Post Office.

Any questions

If you have any questions for the Steering Group, please email us at plan@my-crudwell.org. You can also speak with Wiltshire Council's Spatial Planning team on 01225 713598 or email: neighbourhoodplanning@wiltshire.gov.uk. The my-crudwell.org website also has a comprehensive Q&A section.

We hope to hold public drop-in events, but given the coronavirus we may not be able to. We do plan to hold virtual events and Q&A sessions however. Please visit our website www.my-crudwell.org for up to date information on this.

What happens next?

Once comments have been received, Wiltshire Council will appoint an independent examiner to review the plan and representations.

Thanks all and take care

You can join our Neighbourhood Plan email list at <http://www.my-crudwell.org/plan/signup/>

Sian Burke-Murphy, Chair; Crudwell Neighbourhood Plan Steering Group

Roy F Lambley, Secretary; Crudwell Neighbourhood Plan Steering Group

Zoom Bible Study

Join us for a 'Zoom Bible study' looking at the book of Ruth.

When: Mondays during July
Time: 10am
Where: From the comfort of your own home
Who: Everyone is invited to join Richenda

Please contact Alison: admin@deanery.org.uk for the login details.

Braydon Brook Benefice Services and Other Activities

WELCOME BACK

Your church is now OPEN for weekly **private prayer** each Sunday between 2.30pm & 3.30pm

Please remember: Social Distancing ~ the 2m rule applies No physical contact.

Please wash your hands before you arrive at church and on entering and leaving, please use the hand sanitising facilities.

Please join us from your own home for our services



Sunday 5th July 10am Livestreamed Worship on our YouTube page

<https://www.youtube.com/channel/UC2E0sHLRH5aXv8CaXOUTKNg>

10.45am Agape Fellowship Meal via Zoom

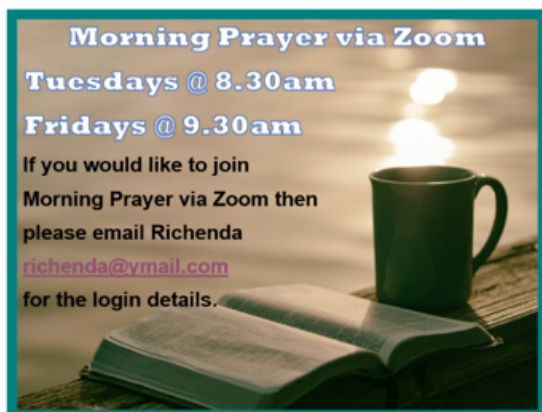
6.30pm Evening Prayer BCP via Zoom

Sunday 12th July 10.00am Morning Worship when in our own homes via Zoom

Sunday 19th July 10.45am Agape Fellowship Meal via Zoom

6.30pm Livestreamed Service looking at faith-related questions

Sunday 26th July 10.00am Friends and Family Service via Zoom



Please visit our website www.braydonbrook.co.uk and Braydon Brook Churches Facebook Page to find out more.

Malmesbury U3A

Malmesbury & District U3A is, like all organisations, sadly not currently meeting in person. However, we are pleased to say some of our interest groups are meeting virtually and we have recently had our first virtual monthly meeting with speaker and over 80 members. Our regular editions of the Lockdown News keep us in touch with members.

Malmesbury U3A is now 5 years old and we look forward to being able to celebrate this milestone when life returns to normal. If you are retired or semi-retired do join us (now or in a few months' time). We have more than 500 members and 40 different interest groups including book group, history, gardening, dancing, theatre trips, languages, walking etc. Check our website for an up -to-date list of groups and other information: www.malmesburyu3a.org.uk.

Please contact Elaine Sharp for more information on 01666 823568 or e-mail membership@malmesburyu3a.org.uk.

Monthly meetings will resume as soon as possible on the 4th Thursday of the month (10.00- 12.00) at Malmesbury Town Hall. We will look forward to meeting with others for tea/coffee and a chat and then enjoy listening to our monthly speaker. Non -members welcome. 50p donation.

Before lockdown we enjoyed talks by excellent speakers on 'The History of Penguin Books', 'The Beauty and Uses of Trees', 'Life as an Expedition Doctor' and 'Dickens in Wiltshire'.

Janette Barstow

Crudwell Village Hall

All the regular groups have cancelled their sessions and no new bookings are being taken until further notice. All June 'ad hoc' bookings have been cancelled. Ad hoc bookings further ahead will be reviewed nearer the time.

Anyone requiring information should contact chair@cvhrg.org.uk or bookings@cvhrg.org.uk.

In accordance with government guidelines, the multi-sports facility is closed until further notice.

Crudwell Village Hall (charity no.294177) is run by a committee of independent volunteers.

Rental income covers its maintenance and running costs.

Village and Local Organisations

The following village and local organisations are not operating at the moment but if you need contact them or want to know more about them details are below.

Short Matt Bowls - Anita Smith, anitahill.smith@gmail.com

Tai Chi - Margaret English, margaretenglish261@btinternet.com

Crudwell Ladies - Margaret English, margaretenglish261@btinternet.com

Ladies Luncheon Club - Margaret English, margaretenglish261@btinternet.com

Badminton Club - Nigel Kelly, nigkelly@gmail.com

Pre-School - Cathy Harris, info@crudwellpreschool.co.uk

Beaver, Cubs and Scouts - Tamsyn Luggar, crudwellscoutgroup@gmail.com

Malmesbury and District U3A - Janette Barstow, janette@jbarstow.plus.com

NW Villages Flower Club - Liz Parker, aelizparker@gmail.com

JAGGED EDGE DESIGN LTD
ARCHITECTURAL DESIGN SPECIALISTS

We specialise in bringing considered design to new build domestic houses, extensions and refurbishments.

We offer a comprehensive, professional service covering - Design, Planning, Building Regulations, and if you wish Project Management.

Call Gary or Andrea Lawes on - 01285 841317
or email info@jaggededgedesign.co.uk
www.jaggededgedesign.co.uk

Talking Wines

Independent Wine Shop
Hundreds of wines available

3 Emmervale Court, Midland Road,
Cirencester GL7 1PZ
Tel: 01285 650250
www.talkingwines.co.uk

FRENCH / GERMAN LESSONS

Tuition given in either French or German, any level, beginners to A-level, by experienced language teacher.

- Oral practice in preparation for exams
- Adult conversation classes
- Help with grammar
- Individual lesson or small group lessons

For more information call Elizabeth on 01666 577565
email Liz.Churchill@outlook.com

Independent Speech and Language Therapists

Are you worried about your child's speech or language development?

We are experienced therapists, who can provide a high quality and friendly service: offering assessment and therapy for children within their home/nursery or school environment.

Call us to discuss your concerns:

Jo Roberts: 07827 294721
www.joroberts-slt.co.uk

Annette McLaren: 07917 604923
www.annettemclaren-slt.co.uk

www.facebook.com/annetteandjoslt

McTimoney Chiropractic and Cranial Sacral Therapy

JULES BLANCH

Safe and effective way to realign your body to relieve pain and discomfort, and increase mobility

Helps back and neck pain, muscular aches, arthritic pain, headaches and other conditions

A gentle hands on approach to restoring health and vitality in children and adults

Jules Blanch BSc (Hons), DC, MCCA, PCST | 1 Church Cottage Crudwell Malmesbury Wiltshire SN16 9ER
tel: 01666 577277 | mob: 07702 834800 email: treatment@julesblanch.co.uk | web: julesblanch.co.uk

Malmesbury Domestic Appliances

Repairs of : Washing Machines, Tumble Dryers, Dishwashers and Electric Cookers

Contact: 07766 164159 01666 824652
mda4u@hotmail.co.uk

The Nail Cabin

Fancy giving yourself some sparkle?

INTRODUCTORY OFFER
£10.00 OFF YOUR FIRST SET OF GELS!

The Nail Cabin is a brand-new small business offering Gel and Acrylic nail treatments from my home in Follyfield, Hankerton.

Enjoy a mini manicure with Gel polish to give your hands and/or feet a beautiful sparkle using the brand new Glitterbels Gel System. I also have a Glitterbels builder-gel and acrylic for those wanting a harder finish.

As I have recently qualified, I have an **INTRODUCTORY OFFER** of £15.00 for your first set of gels (hands or feet)

To book an appointment, please call or text Emma Watts on 07595 618662 or 01666 577905.

the_nailcabin

Payment accepted by card, Apple Pay or Cash

STABLES TO LET
EASTCOURT, MALMESBURY

EXCELLENT FACILITIES INCLUDE:

- Stables within a large barn
- Quiet Location
- All Year Turn Out
- Tack Room & WC
- Outdoor School 30m x 50m with Lights
- All Weather Lunging Ring
- Horsewalker
- Wash Down Area
- Lorry Parking

CONTACT: Sara Palmer on 01666 577699 / 07974021006

Tom Murphy
7 Gooselands,
Crudwell, SN16

T M Installations
Plumbing and heating engineer

Capacity: 150-200 people
Plus 15 seat committee room
Newly renovated kitchen
Large car park for 30-40

For bookings, availability or more information
e-mail: bookings@cvhrg.org.uk

WoiC Income and Expenditure as at 3 July 2020

19/6/20 opening Bank Balance	£1,024.73
Bank Interest	£ 0.04
Balance at 3/7/20	£1,024.77

Disclaimer

© 2020 the publishers of What's on in Crudwell. The information contained herein is provided for general information purposes only, and the opinions expressed are the responsibility of the authors and advertisers. Advertising space is sold in good faith and does not imply an endorsement or promotion of the products or services offered. The publishers shall have no liability for errors, omissions or inadequacies, for the quality of goods or services purchased as a result of such advertisements, or for any consequential loss or damage. The publication may not be reproduced or distributed in any form without the publishers' written permission. Contacts: David Mitcham d_m_mitcham@yahoo.co.uk or Jules Burton jules.burton@rocketmail.com.