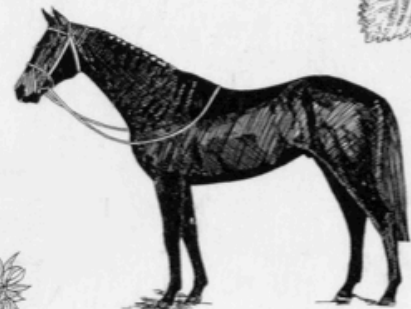


# What's on in Crudwell

Issue 57 - 17 July 2020





Tel: 01666 577739

[tobygregory@aol.com](mailto:tobygregory@aol.com) [wheatsheafcrudwell.co.uk](http://wheatsheafcrudwell.co.uk)

### *Take away service*

*We will be offering a limited takeaway service until further notice.*

*Please ring 01666 577739 or*

*Email [tobygregory@aol.com](mailto:tobygregory@aol.com)*

*Available:*

*Mondays, Wednesdays, Fridays and Saturdays*

*5.30pm until 7.00pm*

*Order early to avoid disappointment!*

*Menu choices From £8.00*

*Pepperoni or Margherita approx 12" Pizza*

*6oz Cheese burger with chips*

*Breaded Scampi and chips*

*Chicken and bacon Caesar salad*

*Beer battered cod and chips*

*Chicken Curry with rice*

*Beef lasagne with chips*

*Vegetarian option available*

*Desserts (to be heated at home) From £4.00*

*Ginger sponge with custard*

*Chocolate brownie*

*Fresh eggs, and Cider, Beer and Lager bottles.*

*Birra Moretti*

*Thatchers: Vintage, Haze, Katy, Gold*

*Old Speckled Hen*

*Cash or card payments*

**Deliveries by arrangement**

**See [www.wheatsheafcrudwell.co.uk](http://www.wheatsheafcrudwell.co.uk) for updates**

#### **Suspended**

Monday night: Freshly battered cod & chips

£9.00 5.30-7pm

Monday - Friday: Two course steak supper

£13.50 5.30-8pm

Roast Sunday lunch with free dessert

£13.50 12.00-2pm

***All offers subject to availability. Closed all day on Tuesdays***

## Contents

Items of Interest	Page 3
Parish Council Report	Page 3 - 5
Crudwell Neighbourhood Plan Important Announcement	Page 5
A Message from Reverend Tonya	Page 6
Braydon Brook Benefice Services and Other Activities	Page 6
Zoom Bible Study	Page 7
Malmesbury U3A	Page 7
Village Hall	Page 7
Village and Local Organisations	Page 8
Advertisements	Page 2 and 9

## BLACK LIVES MATTER

### Items of Interest

We would very much welcome contributions from new sources as the content of What's on has become repetitive, predictable and, frankly, boring! We'll consider any article (as long as its not controversial), for example: anything interesting you've been doing during lockdown; a favourite recipe; a gardening tip; a walk or cycle ride you would recommend; an activity for children to keep them occupied and entertained: interesting web sites you've discovered, a hobby you'd like to tell people about. Do contact us if you want to provide a contribution. The next copy date is noon on 30 July.

Stay safe and well.

Best Wishes

*David and Jules*

[d\\_m\\_mitcham@yahoo.co.uk](mailto:d_m_mitcham@yahoo.co.uk) [jules.burton@rocketmail.com](mailto:jules.burton@rocketmail.com).

## Crudwell Parish Council and Covid-19 Report 17 July

### Dog fouling in Crudwell

The Parish Council has received complaints from residents about dogs fouling where owners are failing to pick up the excreta and bag it.

The Council provides bins in Crudwell which are emptied on a regular basis. It is not acceptable or allowed by law to let your dogs foul on pavements and playing fields, or leave bags of dog mess in public areas within the village. Please bear a thought for the Council's team that are left with the job of clearing up the mess, and if you become aware of anyone abusing these public facilities please let the Parish Council know. People who do not clean up after their dog can be given an on-the-spot fine. If they refuse to pay the fine, they can be prosecuted and may face a court appearance with a maximum penalty of £1,000. Registered blind dog owners are exempt from penalties.

Dog mess is an eyesore and a health hazard. If you are a dog owner, you have a legal duty to clean up every time your dog messes in a public place. Local councils require dog owners to carry a poop scoop and disposable bag whenever they take their dogs out to a public place. If you cannot find a bin, then please double wrap the dog bag and take it home.

Current Dog Fouling Regulations are:

- Environmental Protection Act 1990. Imposes duty on local councils to keep specific public places clear of dog faeces.
- Dogs Fouling of Land Act 1996 Maximum penalty- £1000.
- The Anti-social Behaviour, Crime and Policing Act 2014 came into force on 20 October 2014. This Act allows authorities to designate public spaces where certain activities are prohibited. Public Spaces Protection Orders (PSPOs) can be made to prevent persistent or continuing activities that have a detrimental effect on the quality of life of those in the area, such as dog fouling.

## Parish Council Meetings

The Parish Council continues to hold virtual meetings the next of which is scheduled for Tuesday, 4th August 2020 at 7:00pm. You will, if you wish, be able to join this meeting remotely via Zoom.

The agenda and instructions on how to take part will also be made available on the PC website in due course at: <http://www.crudwell-pc.gov.uk/>

Should parishioners have specific issues they can contact the parish clerk at [parish.clerk@crudwell-pc.gov.uk](mailto:parish.clerk@crudwell-pc.gov.uk) or Chairman [peter.gilchrist@crudwell-pc.gov.uk](mailto:peter.gilchrist@crudwell-pc.gov.uk) (phone 577615.)

The my-Crudwell website and mailing list developed with Council support at: <http://www.my-crudwell.org/category/news/covid-19-news/> has links to many local services and provides access to this on-line What's On in Crudwell (WOIC) journal page which has an average of 140 reads per publication. The my-Crudwell.org site also has links to the excellent Street Leaders support network and a my-Crudwell mailing list to keep you informed of developments and receive access to WOIC online publications which are currently two weekly. You can join the my-Crudwell mailing list at: [www.my-Crudwell.org](http://www.my-Crudwell.org).

Our excellent team of Street Leaders continues to give support to vulnerable and at risk parishioners and lessons learned from the experience are helping to inform the Parish Emergency Plan.

## News from Wiltshire Council

### Got symptoms? Get tested!

Residents in Wiltshire and Swindon are being urged to get tested for coronavirus as soon as they experience symptoms.

The two Directors of Public Health within the county are increasingly concerned that people are adopting a 'wait and see' approach if they feel unwell, perhaps not realising that testing facilities are available locally.

Regional testing sites, which are open seven days a week, are based at Wroughton park & ride in Swindon and Beehive park & ride in Salisbury. In addition, a mobile testing unit will be at County Hall's Mortimer Street car park in Trowbridge several days a week as of 13 July initially it will be available from 13-16 July, then for six days from 19 July.

Anyone experiencing a new, continuous cough, a high temperature, and/or a loss of or change in their normal sense of smell or taste, can book a test online.

### Young people encouraged to use Early Mental Health and Counselling Support Service

Young people in Wiltshire are being reminded support is out there if they are struggling with emotional wellbeing during COVID-19.

We worked with CCG and commissioned charity Barnardo's earlier this year to provide advice for 5-18-year-olds who may be experiencing:

- Low mood
- Panic, stress, worry and low level anxiety
- Problems sleeping
- Anger difficulties
- Low self-esteem
- Relationship difficulties with family or friends
- Relationship problems at school or in the community (including bullying)
- Feeling overwhelmed by pressure; for example in relation to school work

## Crudwell Parish Council and Covid-19 Report 17 July - continued

### Leisure services update

Wiltshire Council are pleased that the government has confirmed that leisure facilities can open soon.

We're working hard on our reopening plans, which will follow government and public health guidance and support active health for residents within a safe and enjoyable environment.

We'll have more details on our plans soon and look forward to welcoming people back.

Look out for further updates soon, which will be found on our leisure pages

*Peter Gilchrist, Chair, Crudwell Parish Council*

## Crudwell Neighbourhood Plan Update 17 July 2020

This update is to remind you that Wiltshire Council commenced the final consultation (called Reg 16) on the Crudwell Neighbourhood Plan on the 29th June. The consultation period is eight weeks and closes 5pm on the 24th August 2020. The Neighbourhood Plan document set is available for you to access on the internet, or by printed copy from Wiltshire Council if you do not have internet access.

It is very important though that you are aware of this consultation and make any representations which you wish to during this period. The plan, when made, will allow us in Crudwell to determine the pace and scale of future developments and to influence their location, design and affordability. Without a made Plan Wiltshire Council might permit extra housing in Crudwell to fix a land supply problem. This is much less likely once we have a made Plan or indeed the closer we get to this.

### Where to view the Plan

A copy of the submitted plan, along with the other supporting documents, is available to review in the following ways:

- view online at: <https://consult.wiltshire.gov.uk/portal/> .
- request a printed copy from Wiltshire Council by emailing [neighbourhoodplanning@wiltshire.gov.uk](mailto:neighbourhoodplanning@wiltshire.gov.uk) or calling 01225 713598 or 770354.
- from the Parish Clerk at: [parishclerk@crudwell-pc.gov.uk](mailto:parishclerk@crudwell-pc.gov.uk) .The consultation period ends at 5pm on Monday 24th August.

### How to submit your comments

Once you have viewed the Plan, any comments need to be sent to Wiltshire Council by emailing [neighbourhoodplanning@wiltshire.gov.uk](mailto:neighbourhoodplanning@wiltshire.gov.uk) or you can leave your comments on Wiltshire Council's consultation portal here: <https://consult.wiltshire.gov.uk/portal/>

A flyer from the Steering Group giving a brief overview of the main plan policies is available on the internet at [my-crudwell.org](http://my-crudwell.org) and copies are available for those not on the internet via your Street Leaders or from the Post Office.

### Any questions

If you have any questions for the Steering Group, please email us at [plan@my-crudwell.org](mailto:plan@my-crudwell.org). You can also speak with Wiltshire Council's Spatial Planning team on 01225 713598 or email [neighbourhoodplanning@wiltshire.gov.uk](mailto:neighbourhoodplanning@wiltshire.gov.uk) .

We are planning to hold a virtual event and Q&A session, details of this and how to join will be published on our website [www.my-crudwell.org](http://www.my-crudwell.org) and on our NP mailing list.

### What happens next?

Once comments have been received, Wiltshire Council will appoint an independent examiner to review the plan and representations.

Thanks all and take care

You can join our Neighbourhood Plan email list at <http://www.my-crudwell.org/plan/signup/>

*Sian Burke-Murphy, Chair; Crudwell Neighbourhood Plan Steering Group*

*Roy F Lambley, Secretary; Crudwell Neighbourhood Plan Steering Group*



## A Message from Reverend Tonya

As lockdown is eased, so the churches in Braydon Brook Benefice are beginning to open once again. For a few weeks now we have been able to open our churches on a weekly basis for Private Prayer. Maybe you have wander in and spent a quiet moment in one of these beautiful buildings?

As of the 4th July, churches have been allowed to open for public worship and this has been heralded as great news, we can now begin to come together and worship once again in these sacred spaces.

The opening up of all six churches is going to take time and the process will be slow. Social distancing and keeping everyone safe is at the top of our list of priorities. Seating will be socially distanced. As you enter church, things will look different.

So this is the plan:

The Braydon Brook Benefice comprises of six churches, within six villages. The largest church is All Saints, Crudwell. It is this Church which will become the focal point initially, and services will be held only in this church. To keep within the social distancing parameters, it is impossible to have all people from all six villages joining together. Instead, each week, people who live in three of the villages will be invited to come. Maybe you have never been to church before or maybe you have begun to follow service online, if yes, and you live in one of these villages, why don't you come along?

It will look like this:

**Sunday 19th July** at 10am Morning Worship Service

Cluster 2 villages are:

Charlton, Hankerton, Oaksey

**Sunday 26th July** at 10am Morning Worship Service

Cluster 1 villages are:

Ashley, Crudwell, Minety

All of our online services will remain, please see the Braydon Brook website for details: <http://www.braydonbrook.co.uk/> . There you will find services using Zoom as the platform, streamed services, readings for the day and so much more.

The services for August have yet to be planned. Bear with us as we continue to remodel all that we do in the world that we all live in at the moment.

So, to end, a verse from one of the Psalms:

"I was glad when they said unto me, "let us go to the house of the Lord."" (Psalm 122 v1)

And glad we are. Why don't you come and be a part of it?

Sending blessings

Revd Tonya

## Braydon Brook Benefice Services and Other Activities

**The church building is now open for public worship on Sundays.**

We are still holding services on Zoom and YouTube.

Sunday 19th July	10.45am	Agape Fellowship Meal via Zoom
	6.30pm	Live-streamed Service looking at faith-related questions
Sunday 26th July	10am	Friends and Family Service via Zoom
	10am	Morning Worship in Crudwell Church (Crudwell, Ashley Minety)



Please visit our website [www.braydonbrook.co.uk](http://www.braydonbrook.co.uk) and Braydon Brook Churches Facebook Page to find out more.

## Zoom Bible Study

Join us for a 'Zoom Bible study' looking at the book of Ruth.

When: Mondays during July  
Time: 10am  
Where: From the comfort of your own home  
Who: Everyone is invited to join Richenda

Please contact Alison: [admin@deanery.org.uk](mailto:admin@deanery.org.uk) for the login details.

## Malmesbury U3A

Malmesbury & District U3A is, like many organisations, discussing how groups can begin meeting again whilst meeting the government guidelines. Our regular editions of the Lockdown News keep us in touch with members. In the meantime we are enjoying meeting up via zoom in both small and large groups and we were delighted that over 80 members enjoyed our first virtual monthly meeting.

Our next monthly meeting via zoom will be on Thursday August 20th. We look forward to a talk on the recent history of Bradenstoke Priory by Mark Thomas. Bradenstoke Priory, in the Parish of Lyneham, was founded as an Augustinian priory in 1142. By the beginning of the 21st century all that remained of it were the ruins of a tower and undercroft, which are situated on Mark and Vicki Thomas's farm. Mark is a keen historian and conservationist so, in 2017, he applied for and was awarded funding by Heritage England under the ancient buildings and protection legislation. This supports hands-on conservation schemes.

Mark will be talking about how the funding has enabled him to stabilise and eventually consolidate the undercroft, and about the fascinating history of the Priory.

Malmesbury U3A is now 5 years old and we look forward to being able to celebrate this milestone when life returns to normal. If you are retired or semi-retired do join us. We have more than 500 members and 40 different interest groups including book group, history, gardening, dancing, theatre trips, languages, walking etc. Check our website for an up-to-date list of groups and other information: [www.malmesburyu3a.org.uk](http://www.malmesburyu3a.org.uk).

Please contact Elaine Sharp for more information on 01666 823568 or e-mail: [membership@malmesburyu3a.org.uk](mailto:membership@malmesburyu3a.org.uk).

Monthly meetings will resume as soon as possible on the 4th Thursday of the month (10.00- 12.00) at Malmesbury Town Hall. We will look forward to meeting with others for tea/coffee and a chat and then enjoy listening to our monthly speaker. Non-members welcome. 50p donation.

Before Lockdown we enjoyed talks by excellent speakers on 'The History of Penguin Books', 'The Beauty and Uses of Trees', 'Life as an Expedition Doctor' and 'Dickens in Wiltshire'.

*Janette Barstow*

## Crudwell Village Hall

All the regular groups have cancelled their sessions and no new bookings are being taken until further notice. All June 'ad hoc' bookings have been cancelled. Ad hoc bookings further ahead will be reviewed nearer the time.

Anyone requiring information should contact [chair@cvhrg.org.uk](mailto:chair@cvhrg.org.uk) or [bookings@cvhrg.org.uk](mailto:bookings@cvhrg.org.uk).

In accordance with government guidelines, the multi-sports facility is closed until further notice.

Crudwell Village Hall (charity no.294177) is run by a committee of independent volunteers.

Rental income covers its maintenance and running costs.

## Village and Local Organisations

The following village and local organisations are not operating at the moment but if you need contact them or want to know more about them details are below.

Short Matt Bowls - Anita Smith, [anitahill.smith@gmail.com](mailto:anitahill.smith@gmail.com)

Tai Chi - Margaret English, [margaretenglish261@btinternet.com](mailto:margaretenglish261@btinternet.com)

Crudwell Ladies - Margaret English, [margaretenglish261@btinternet.com](mailto:margaretenglish261@btinternet.com)

Ladies Luncheon Club - Margaret English, [margaretenglish261@btinternet.com](mailto:margaretenglish261@btinternet.com)

Badminton Club - Nigel Kelly, [nigkelly@gmail.com](mailto:nigkelly@gmail.com)

Pre-School - Cathy Harris, [info@crudwellpreschool.co.uk](mailto:info@crudwellpreschool.co.uk)

Beaver, Cubs and Scouts - Tamsyn Luggar, [crudwellscoutgroup@gmail.com](mailto:crudwellscoutgroup@gmail.com)

Malmesbury and District U3A - Janette Barstow, [janette@jbarstow.plus.com](mailto:janette@jbarstow.plus.com)

NW Villages Flower Club - Liz Parker, [aelizparker@gmail.com](mailto:aelizparker@gmail.com)



**JAGGED EDGE DESIGN LTD**  
ARCHITECTURAL DESIGN SPECIALISTS

*We specialise in bringing considered design to new build domestic houses, extensions and refurbishments.*

*We offer a comprehensive, professional service covering - Design, Planning, Building Regulations, and if you wish Project Management.*

Call Gary or Andrea Lawes on - 01285 841317  
or email info@jaggededgedesign.co.uk  
www.jaggededgedesign.co.uk

**Talking Wines**

Independent Wine Shop  
Hundreds of wines available

3 Emmervale Court, Midland Road,  
Cirencester GL7 1PZ  
Tel: 01285 650250  
www.talkingwines.co.uk

**FRENCH / GERMAN LESSONS**

Tuition given in either French or German, any level, beginners to A-level, by experienced language teacher.

- Oral practice in preparation for exams
- Adult conversation classes
- Help with grammar
- Individual lesson or small group lessons

For more information call Elizabeth on 01666 577565  
email Liz.Churchill@outlook.com

**Independent Speech and Language Therapists**

Are you worried about your child's speech or language development?

We are experienced therapists, who can provide a high quality and friendly service: offering assessment and therapy for children within their home/nursery or school environment.

Call us to discuss your concerns:

Jo Roberts: 07827 294721  
www.joroberts-slt.co.uk

Annette McLaren: 07917 604923  
www.annettemclaren-slt.co.uk

www.facebook.com/annetteandjoslt

**McTimoney Chiropractic and Cranial Sacral Therapy**

**JULES BLANCH**

Safe and effective way to realign your body to relieve pain and discomfort, and increase mobility

Helps back and neck pain, muscular aches, arthritic pain, headaches and other conditions

A gentle hands on approach to restoring health and vitality in children and adults

Jules Blanch BSc (Hons), DC, MCCA, PCST | 1 Church Cottage Crudwell Malmesbury Wiltshire SN16 9ER  
tel: 01666 577277 | mob: 07702 834800 email: treatment@julesblanch.co.uk | web: julesblanch.co.uk

**Malmesbury Domestic Appliances**

Repairs of : Washing Machines, Tumble Dryers, Dishwashers and Electric Cookers

Contact: 07766 164159 01666 824652  
mda4u@hotmail.co.uk

**The Nail Cabin**

Fancy giving yourself some sparkle?

INTRODUCTORY OFFER  
£10.00 OFF YOUR FIRST SET OF GELS!

The Nail Cabin is a brand-new small business offering Gel and Acrylic nail treatments from my home in Follyfield, Hankerton.

Enjoy a mini manicure with Gel polish to give your hands and/or feet a beautiful sparkle using the brand new Glitterbels Gel System. I also have a Glitterbels builder-gel and acrylic for those wanting a harder finish.

As I have recently qualified, I have an **INTRODUCTORY OFFER** of £15.00 for your first set of gels (hands or feet)

To book an appointment, please call or text Emma Watts on 07595 618662 or 01666 577905.

the\_nailcabin

Payment accepted by card, Apple Pay or Cash

**STABLES TO LET**  
EASTCOURT, MALMESBURY

EXCELLENT FACILITIES INCLUDE:

- Stables within a large barn
- Quiet Location
- All Year Turn Out
- Tack Room & WC
- Outdoor School 30m x 50m with Lights
- All Weather Lunging Ring
- Horsewalker
- Wash Down Area
- Lorry Parking

CONTACT: Sara Palmer on 01666 577699 / 07974021006

**Tom Murphy**  
7 Gooselands,  
Crudwell, SN16

**T M Installations**  
Plumbing and heating engineer

Capacity: 150-200 people  
Plus 15 seat committee room  
Newly renovated kitchen  
Large car park for 30-40

**For bookings, availability or more information**  
e-mail: bookings@cvhrg.org.uk

## WoiC Income and Expenditure as at 17 July 2020

19/6/20 opening Bank Balance	£1,024.73
Bank Interest	£ 0.04
Balance at 17/7/20	£1,024.77

## Disclaimer

© 2020 the publishers of What's on in Crudwell. The information contained herein is provided for general information purposes only, and the opinions expressed are the responsibility of the authors and advertisers. Advertising space is sold in good faith and does not imply an endorsement or promotion of the products or services offered. The publishers shall have no liability for errors, omissions or inadequacies, for the quality of goods or services purchased as a result of such advertisements, or for any consequential loss or damage. The publication may not be reproduced or distributed in any form without the publishers' written permission. Contacts: David Mitcham d\_m\_mitcham@yahoo.co.uk or Jules Burton jules.burton@rocketmail.com.