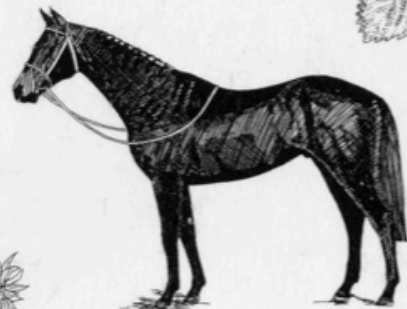


What's on in Crudwell

Issue 59 - 14 August 2020





The Wheatsheaf Inn will be temporarily closed from 9th August until mid-September 2020.

We apologise for any inconvenience that this may cause.

Contents

The Future for What's on	Page 2
Parish Council Report	Page 3
Crudwell Neighbourhood Plan	Page 3 - 5
Crudwell Village Hall	Page 5
Dorothy House Quiz	Page 5
Braydon Brook Benefice Services and Other Activities	Page 6
Village and Local Organisations	Page 6
Advertisements	Page 2 and 7

BLACK LIVES MATTER

The Future for What's on

This will be the last fortnightly, on-line only, edition of What's on in Crudwell. As from the beginning of September we will be resuming printing and by-hand distribution of the monthly, paper version. What's on will still be made available on the my-Crudwell web site. Please remember What's on is entirely independent of any village organisation or government body and is run on a non-profit and voluntary basis.

As part of the re-launch we will be including a 'For Sale' section for you to advertise any unwanted items. Space will be limited so please restrict item descriptions to no more than 100 words. Please include a telephone number or an e-mail contact. For the time being there will be no charge for this. If you want to send us an advertisement please let us have it by noon on 20 August using either e-mail address below.

If you have a text contribution for the September, paper, edition please let us have it by noon on 20 August.

Stay safe and well.

Best Wishes

David and Jules

d_m_mitcham@yahoo.co.uk jules.burton@rocketmail.com.

Crudwell Parish Council and Covid-19 Report 14 August

Parish Council Meetings

The Parish Council continues to hold virtual meetings the next of which is scheduled for Tuesday the 1st September 2020 at 7:00pm. You are, if you wish able to join this meeting remotely via Zoom. The agenda and instructions on how to take part will be available on the PC website at: <http://www.crudwell-pc.gov.uk/> .

Should parishioners have specific issues they can contact the parish clerk at parish.clerk@crudwell-pc.gov.uk or Chairman peter.gilchriest@crudwell-pc.gov.uk (phone 577615.)

The my-Crudwell website and mailing list developed with Council support at: <http://www.my-crudwell.org/category/news/covid-19-news/> .

has links to many local services and provides access to this on-line What's On in Crudwell (WOIC) journal page which has an average of over 200 reads per publication. The my-crudwell.org site also has links to the excellent Street Leaders support network and a my-Crudwell mailing list to keep you informed of developments and receive access to WOIC online publications which will revert to monthly from September 2020. You can join the my-Crudwell mailing list at: www.my-Crudwell.org.

Our excellent team of Street Leaders continues to give support to vulnerable and at risk parishioners and lessons learned from the experience are helping to inform the Parish Emergency Plan.

A new charter and rules for the official Crudwell Facebook page have now been endorsed by the Parish Council. The rules are designed to ensure that the page is available only to our community and remains focussed on our local area. The page is now being administered locally with direct input from the Parish Council. While the page has now well over 700 members it is important that it remains focussed on Crudwell and the surrounding area.

Information from Wiltshire Council

Wiltshire Libraries

Some Wiltshire libraries are now open in accordance with plans to reopen some of our library services safely in phases during the COVID-19 pandemic. Trowbridge Library reopened on Monday 3 August and Chippenham and Salisbury libraries reopened on Tuesday 4 August.

Corsham, Devizes and Warminster libraries will reopen in the week beginning 24 August. These libraries will be fully reopened for people to browse for up to 30 minutes, to select and loan books and use the computers; though they will be operating different opening hours, and with safety measures in place to ensure social distancing and keep people as safe as possible.

Then, during September, Amesbury, Bradford-on-Avon, Calne, Malmesbury, Marlborough, Melksham, Royal Wootton Bassett and Westbury libraries will all reopen to the public. They will be offering an order and collect service with bookable computers. A service that allows people to browse in these libraries will be introduced as soon as it's feasible to do so.

This mix of approaches allows additional libraries to reopen and provides increased coverage across the county sooner than would be possible with only a browsable service.

For the latest service updates and health advice, please visit the [COVID-19](#) page.

Please note libraries are closed on bank holidays and opening times may vary between Christmas and New Year and at Easter. Further details can be found on the [libraries news page](#).

Crudwell Neighbourhood Plan Update 14 August

We are now in week six of Wiltshire Council's final consultation (called Reg 16) on the Crudwell Neighbourhood Plan which closes at 5pm on Monday the 24th August 2020. The Neighbourhood Plan document set is available for you to access on the internet, or by printed copy from Wiltshire Council if you do not have internet access.

Please ensure that you make any representations which you wish to by that date. The plan, when made, will allow us in Crudwell to determine the pace and scale of future developments and to influence their location, design and affordability. Without a made Plan Wiltshire Council might permit extra housing in Crudwell to fix a land supply problem. This is much less likely once we have a made Plan or indeed the closer we get to this.

Where to view the Plan

A copy of the submitted Plan, along with the other supporting documents, is available to review in the following ways:

- view online at <https://consult.wiltshire.gov.uk/portal/>
- by requesting a printed copy from Wiltshire Council by emailing: neighbourhoodplanning@wiltshire.gov.uk , or calling 01225 713598 or 770354.
- from the Parish Clerk at: parishclerk@crudwell-pc.gov.uk . The consultation period ends at 5pm on Monday 24th August.

How to submit your comments

Once you have viewed the Plan, any comments need to be sent to Wiltshire Council by emailing neighbourhoodplanning@wiltshire.gov.uk or you can leave your comments on Wiltshire Council's consultation portal here: <https://consult.wiltshire.gov.uk/portal/> .

A form and paid reply envelope can be provided by contacting Wiltshire Council by email or calling the numbers above.

A flyer from the Steering Group giving a brief overview of the main plan policies including the housing site allocation is available on the internet at my-Crudwell.org and copies are available for those not on the internet via your Street Leaders.

Tuners Lane meeting, subsequent press report and our response

It is of course inevitable that residents will have concerns about housing developments, particularly those which may be near to their own homes. In order to address this issue a socially distanced question and answer session for Tuners Lane residents was held in the parish allotments between 11am and 12:30pm on Saturday the 8th August. The event was well attended by local residents and by Steering Group members who addressed a number of challenging questions posed by the residents! Many of the issues raised have previously been addressed in the FAQ section of the my-Crudwell website at <http://www.my-crudwell.org/plan/faqs/>.

A report of the meeting has also been posted on the Wilts and Glos Standard website and Facebook page on the 11th August 2020 and we are responding to that article as follows:

The article includes a number of points that we feel are inaccurate, particularly in relation to the need for the homes proposed at Tuners Lane, flooding and highways safety issues that stem from the development, so we would like to take this opportunity to correct those points.

In terms of the need for the houses, it is not correct that the Government requires every large village to provide an additional 20 homes by 2026.

In fact, the detailed consultation undertaken by the Steering Group determined that the local community wanted more affordable homes. The best way to deliver those affordable homes is by allocating a site for 20 to 25 new houses, 40% of which will be affordable. 100% will be designed with the local community's input, so we can influence the size, tenure and design of all of them, through a Community Liaison Group.

If the Crudwell Neighbourhood Plan does not allocate any land for new houses, then the local community risks losing control over where development goes.

Wiltshire Council planned to allocate a site for another 40 homes at Ridgeway Farm but later agreed to remove that allocation so that the Crudwell Neighbourhood Plan could determine the number of homes needed locally and decide where they should go. A Government Inspector agreed that the Neighbourhood Plan should be left to make this decision too. So if the Neighbourhood Plan does not allocate a site, there is a chance that Wiltshire Council might allocate a site for us.

However, the greatest risk would come from developers submitting planning applications because it is easier for a developer to get planning permission for housing outside Crudwell's settlement boundary if there is no Neighbourhood Plan with a housing allocation in place.

One of the main reasons that the expanded Ridgeway Farm plan was refused at appeal was because the appeal Inspector also thought that it would be best for the local community to decide where housing should go.

The Facebook article notes community concerns about flood risk. This is clearly a concern for all of us because of the flooding that has occurred in the past. We understand that.

Flooding can occur from rivers (or the sea), from surface water flows and from groundwater.

In Crudwell's case, flooding occurs because, in heavy rain, surface water flows so fast from the land that the Swill Brook can't cope.

The surface water also gets into gaps in the sewer pipes, which caused the sewage overflows in the past.

Crudwell Neighbourhood Plan Update 14 August - continued

Wessex Water has fixed the leaks in the sewer pipes, so the sewage overflow should not happen again.

Surface water flows from any new housing site around Crudwell must be held on site and released only when the Swill Brook can cope. This is done either by creating a large green area that is designed to flood in wet weather, or by using underground tanks, normally under roads. These will be designed to store the rain that would fall in once in 100 years storm, and allowing for climate change too. This is required by policy DD1, which allocates the Tuners Lane site. This solution has also been deployed in Chapel Close, Tetbury Lane which also discharges into the Swill Brook to the north.

Additionally, policy IT1 ensures that any site that is developed in Crudwell includes the same measures to control surface water flows into the Swill Brook, to ensure that development improves the current situation rather than making it worse.

In terms of the concerns raised about road safety, one of the reasons that the Tuners Lane site was chosen over the Ridgeway Farm site is that the Tuners Lane is less busy than Tetbury Lane, and it is easier to extend the existing footpath all the way to the A429 on Tuners Lane. The Tuners Lane site is also closer to more of the village's facilities than the Ridgeway Farm site is.

The Steering Group looked at whether a footway could be built along the edge of Tetbury Lane, but concluded that this would be very difficult because Tetbury Lane is narrow in places, and because it has hedges along it that the local community value.

The Neighbourhood Plan also includes a policy – IT2 – which requires developers to demonstrate how pedestrians will safely access the parish's facilities from the site.

We hope that this clarifies a few points that might be of concern to the local community, and we look forward to hearing from as many of you as possible by 24th August.

Sian Burke-Murphy - Chair

Cllr Roy Lambley - Secretary

Crudwell Neighbourhood Plan Steering Group

Crudwell Village Hall

The voluntary Trustees and management of the Village Hall are continuing to follow the government guidelines in respect of the pandemic restrictions and we are further guided by Community First (Wiltshire) that is a member of Action in Communities in Rural England (ACRE). Communications from ACRE et al concerning re-opening and future hires are reviewed regularly and in the light of the slow transition out of lockdown and the restrictions effecting indoor class activities, it has been decided that the Hall remains closed until September 2020.

Bookings for September and for the remainder of the year will be taken now subject to the guidelines ruling at the time. Future use of the hall will also be dependent on Hirers following a rigorous hygiene protocol that will be provided at the time of booking. Booking enquiries can be made to bookings@cvhrg.org.uk.

Thank you for your patience and understanding.

Richard Fox

Chair

Crudwell Village Hall and Recreation Ground

Crudwell Village Hall is a UK registered Charity (No 294177) is managed by a committee of independent volunteers. Rental income from public hire covers the maintenance and running costs of the hall and the recreation grounds.

Dorothy House Quiz

We have decided to cancel our annual quiz in November as restrictions are likely to continue past that date. Another date will be arranged but this may not be until November 2021.

Judy Paginton

Braydon Brook Benefice Services and Other Activities

**The church building is now open for public worship on Sundays.
We are still holding services on Zoom and YouTube.**

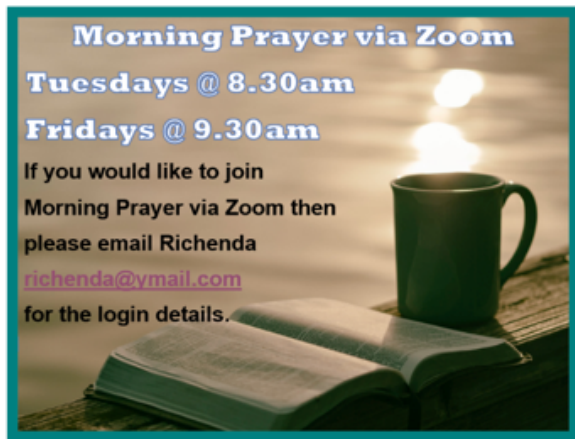
Covid-19 restrictions means to keep within the social distancing parameters, it is impossible to have all people from all 6 villages joining together. Instead, each week, people who live in 3 of the villages will be invited to come.

- Cluster 1 is made up of Crudwell, Ashley and Minety
- Cluster 2 is made up of Charlton, Hankerton and Oaksey

Holy Communion services will look a little different, there will only be the sharing of bread and you are asked to bring your own bread.

Date	Services in Crudwell Church - 10am	Services on Zoom	Services on YouTube
Sunday 16 th August	Morning Worship - Cluster 2	10am Friends&Family	
Sunday 23 rd August	Morning Worship - Cluster 1	10am Morning Worship	
Sunday 30 th August	Morning Worship - Cluster 2	10.30am Agape Fellowship Mean	

Please visit our website www.braydonbrook.co.uk and Braydon Brook Churches Facebook Page to find out more.



Village and Local Organisations

The following village and local organisations are not operating at the moment but if you need contact them or want to know more about them details are below.

Short Matt Bowls - Anita Smith, anitahill.smith@gmail.com

Tai Chi - Margaret English, margaretenglish261@btinternet.com

Crudwell Ladies - Margaret English, margaretenglish261@btinternet.com

Ladies Luncheon Club - Margaret English, margaretenglish261@btinternet.com

Badminton Club - Nigel Kelly, nigkelly@gmail.com

Pre-School - Cathy Harris, info@crudwellpreschool.co.uk

Beaver, Cubs and Scouts - Tamsyn Luggar, crudwellscoutgroup@gmail.com

Malmesbury and District U3A - Janette Barstow, janette@jbarstow.plus.com

NW Villages Flower Club - Liz Parker, aelizparker@gmail.com

JAGGED EDGE DESIGN LTD

ARCHITECTURAL DESIGN SPECIALISTS

We specialise in bringing considered design to new build domestic houses, extensions and refurbishments.

We offer a comprehensive, professional service covering -
Design, Planning, Building Regulations, and if you wish Project Management.

Call Gary or Andrea Lawes on - 01285 841317
or email info@jaggededgedesign.co.uk
www.jaggededgedesign.co.uk



Talking Wines

Independent Wine Shop
Hundreds of wines available

3 Emmervale Court, Midland Road,
Cirencester GL7 1PZ
Tel: 01285 650250
www.talkingwines.co.uk

FRENCH / GERMAN LESSONS

Tuition given in either French or German, any level, beginners to A-level, by experienced language teacher.

- Oral practice in preparation for exams
- Adult conversation classes
- Help with grammar
- Individual lesson or small group lessons



For more information call Elizabeth on 01666 577565
email Liz.Churchill@outlook.com



Independent Speech and Language Therapists

Are you worried about your child's speech or language development?

We are experienced therapists, who can provide a high quality and friendly service: offering assessment and therapy for children within their home/nursery or school environment.

Call us to discuss your concerns:

Jo Roberts: 07827 294721
www.joroberts-slt.co.uk

Annette McLaren: 07917 604923
www.annettemclaren-slt.co.uk
www.facebook.com/anneteandjost




JULES BLANCH

McTimoney Chiropractic and Cranial Sacral Therapy

Safe and effective way to realign your body to relieve pain and discomfort, and increase mobility

Helps back and neck pain, muscular aches, arthritic pain, headaches and other conditions

A gentle hands on approach to restoring health and vitality in children and adults

Jules Blanch BSc (Hons), DC, MChiropr (UKCP) | 1 Church Cottage Crudwell Malmesbury Wiltshire SN16 9ER
tel: 01666 577277 | mob: 07702 834800 email: treatment@julesblanch.co.uk | web: julesblanch.co.uk

Malmesbury Domestic Appliances



Repairs of : Washing Machines, Tumble Dryers, Dishwashers and Electric Cookers

Contact: 07766 164159 01666 824652
mda4u@hotmail.co.uk



Fancy giving yourself some sparkle?

INTRODUCTORY OFFER £10.00 OFF YOUR FIRST SET OF GELS!

The Nail Cabin is a brand-new small business offering Gel and Acrylic nail treatments from my home in Follyfield, Hankerton.

Enjoy a mini manicure with Gel polish to give your hands and/or feet a beautiful sparkle using the brand new Glitterbels Gel System. I also have a Glitterbels builder-gel and acrylic for those wanting a harder finish. As I have recently qualified, I have an **INTRODUCTORY OFFER** of £15.00 for your first set of gels (hands or feet)

To book an appointment, please call or text Emma Watts on 07595 618662 or 01666 577905.

 the_nailcabin Payment accepted by card, Apple Pay or Cash




STABLES TO LET

EASTCOURT, MALMESBURY

EXCELLENT FACILITIES INCLUDE:

- Stables within a large barn
- Quiet Location
- All Year Turn Out
- Tack Room & WC
- Outdoor School 30m x 50m with Lights
- All Weather Lunging Ring
- Horsewalker
- Wash Down Area
- Lorry Parking


CONTACT: Sara Palmer on 01666 577699 / 07974021006



T M Installations

Plumbing and heating engineer

Tom Murphy
7 Gooselands,
Crudwell, SN16



Capacity: 150-200 people
Plus 15 seat committee room
Newly renovated kitchen
Large car park for 30-40

For bookings, availability or more information
e-mail: bookings@cvhrg.org.uk

WoiC Income and Expenditure as at 14 August 2020

31/7/20 opening Bank Balance	£1,024.77
Bank Interest	£ 0.05
Balance at 14/8/20	£1,024.82

Disclaimer

© 2020 the publishers of What's on in Crudwell. The information contained herein is provided for general information purposes only, and the opinions expressed are the responsibility of the authors and advertisers. Advertising space is sold in good faith and does not imply an endorsement or promotion of the products or services offered. The publishers shall have no liability for errors, omissions or inadequacies, for the quality of goods or services purchased as a result of such advertisements, or for any consequential loss or damage. The publication may not be reproduced or distributed in any form without the publishers' written permission. Contacts: David Mitcham d_m_mitcham@yahoo.co.uk or Jules Burton jules.burton@rocketmail.com.