

What's on in Crudwell

Issue 102 May 2025



My
CRUDWELL
A COMMUNITY PUBLICATION



**21/22nd
June**

The Bike Ride Committee is the fundraising arm of Crudwell Village Hall. We are so fortunate to have the large field at the Village Hall and it has been wonderful to see so many people enjoying the new track around the perimeter. The next step is to

install a pump track at the rear of the playing field. This is a specially designed sprung track which enables bikes, skateboards and similar to manoeuvre around the course using the 'pump' effect for momentum – ie no need to pedal. This year's bike ride is a major fundraiser for this exciting activity. We now have 12 teams registered and are looking forward to another successful event, **but the event CANNOT go ahead** unless we have sufficient marshals to safely monitor the course. Our new digital marshal system is working very efficiently and we would encourage you to sign up for your preferred time and location using the marshal sign-up link on our website crudwellbikeride.co.uk. If you would prefer us to sign up for you, please use the contact link on the same website. We look forward to hearing from you.

CRUDWELL STRAWBERRY FAIR 5th/6th July 11.00 – 16.00



This event is a wonderful opportunity to enjoy strawberries with all the trimmings on our village green, opposite the primary school. Relax on garden chairs (under gazebos if it is a little damp!) and listen to a variety of local musicians – a true English tradition!

On the evening of Saturday 5th July, in the same setting, we have The Stories playing from 7pm. Bring along your own picnic to enjoy this excellent group, who were a great hit at the last Strawberry Fair in 2023. Tickets will be on sale nearer the time, with proceeds going to the Church.

We would greatly **welcome additional volunteers** to serve and prepare the strawberries, provide any music in the afternoon, and help with the general set up and running of the event. For any offers of help or if you would like to run a stall, please contact Angela at ajking23@live.co.uk

— The —
WHEATSHEAF INN
CRUDWELL

Treat yourself to Spanish Paella

During the Month of May 2025

Served on Fridays and Saturdays from 3rd May

Traditional Paella made using saffron flavoured
rice, seafood and chicken and vegetable
ingredients

Vegetarian option available

Originating from the rice producing area of
Valencia

Served in individual Paella pans

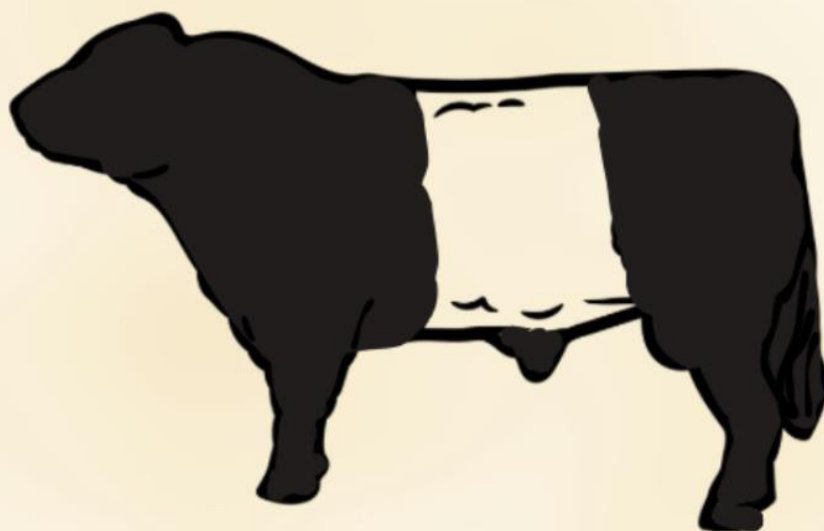
Bookings now being taken

01666 577739

tobygregory@aol.com

Our usual full menu will also be available.

MURCOTT



FARM SHOP

hello@murcottfarmshop.co.uk

Looking forward to
OPENING SOON!



Some snippets from the Crudwell Courier's Special Supplement issued in May 1995 celebrating the 50th anniversary of VE Day. The reminiscences were compiled by Ruth Pain after speaking to Crudwell residents who lived in the village during 1939-45.

A YOUNG LAD REMEMBERS

On 3rd September, 1939 at 12 noon we heard that England had declared war with Germany. I thought it was great fun to go to war with another country, not realising the implications. In October we had evacuees arrive at Malmesbury Station, and ferried round to the local villages - everyone who had a spare bedroom was obliged to take one or two children. They soon settled into the ways of country people.

Crudwell farmers worked ceaselessly to cultivate crops and livestock so that as much food as possible came from local resources. They worked long, hard hours, but did have some help from prisoners of war, who lived in. Help also came from girls of the Women's Land Army.



OUR OLD VILLAGE HALL

The old Village Hall was used for many wartime activities - as a boys' schoolroom, a dance hall and as a canteen.

Regular dances were held on Friday nights, when girls would cycle in from the surrounding villages, and among the servicemen who danced the night away, were American soldiers, who were camping in Charlton Park. They would travel in a big Army lorry, which would park in Carpenter's Yard.



IN THE HOME

Many registered at the Village Shop for their weekly rations, 2oz. butter, 2oz. cheese, 2oz. tea which could be bought on each Ration Book. Each person was allowed 1/2d. (6p) worth of meat per week. To supplement the ration one egg per person a week many Crudwell families kept hens.

HOME DEFENCES

With so many airfields in the area Crudwell prepared for the consequences.

Army Searchlight and Ack-ack crews at Quelfurlong must have done an efficient job as only a few German planes dropped their bombs locally, some at Kemble and Long Newton airfields, and three at Oaksey.

Concrete pill boxes

also sprung up and the crumbling remains of two can be seen on the Long Newton/Culkerton road, one on the Crudwell/Long Newton road, and another on the Crudwell/Cirencester road near Kemble Airfield. These were manned by Home Guard machine gunners.

Men from Crudwell
Platoon B co. 2nd
Bn Wiltshire Home
Guard



At night men from Eastcourt had to guard Skew Bridge over the railway line and were also detailed to guard the Kemble to Minety stretch of railway track by walking up and down all night.

AFTER THE WAR WAS OVER

On 8th May, 1945, VE Day, All Saints Church bells rang out for the first time since hostilities began, and as in towns and villages throughout Britain, Crudwell celebrated Victory in Europe with its street party, albeit on the Village Green, for the school children. Extra rations were available, but mainly mothers donated some of their precious points for little cakes, biscuits, jellies and sandwiches for a "real" party.

Want to read more?
Go [to](https://www.my-crudwell.org/crudwell-blog/)
[https://www.my-](https://www.my-crudwell.org/crudwell-blog/)
[crudwell.org/crudwell](https://www.my-crudwell.org/crudwell-blog/)
[-blog/](https://www.my-crudwell.org/crudwell-blog/)

Crudwell Pre-School

We hope you all had a lovely Easter. Before we broke up for half term the children were busy creating beautiful Easter cards for our random act of kindness. We posted and handed them out personally at the end of term. We hope those who received them loved them, as I am sure they will have.

The children have shown interest in octopuses and flying fish, so this term's theme is "Under the sea". We will be enjoying sinking and floating experiments, reading stories both fiction and non-fiction and creating different aquatic animals.

Our register is now open for September starters and we also have an open day on Thursday 29th May from 9:30 – 2pm. There is no need to book an appointment just come along and visit us, we would love to meet you.

For any more information, please contact me (Cathy) on 07986622191 or info@crudwellpreschool.co.uk.

Crudwell Pre-school (Charity Reg. No. 1186585) Crudwell Village Hall – Monday, Wednesday, Thursday and Friday - from 9am to 3pm for 2 to 5 year olds

Crudwell Multi-Sports Facility

- The courts were built to **play tennis, netball, basketball and 5/side football.**
- There is **no charge** for the use of the courts.
- **Maintenance costs are funded entirely by donations, which can be made at The Wheatsheaf, Crudwell Post Office or online by bank transfer. A suggested donation could be £10/hour per court.**
- If you play regularly, please consider joining our **subscription scheme** for a donation of **just £5/month.**
- Help keep the courts in good condition especially **NO WHEELS ON THE COURTS!** Thank you.

Crudwell Recreation Action Group (CRAG) part of the Crudwell Village Hall & Recreation Ground charity no.294177
Email
bookings@cvhrg.org.uk
for more information.

Netball for all takes place from 6pm to 7pm on Mondays. Phone **Debbie on 07880 606702** for more information.

On Tuesdays, it's tennis starting at around 5.00pm and we have a WhatsApp group to confirm if we have enough people to play.

FRENCH/GERMAN LESSONS

Tuition given in either French or German, any level, beginners to A level, by experienced language teacher.

- **Oral practice in preparation for exams**
- **Adult conversation classes**
- **Help with grammar**
- **Individual or small group lessons**

For more information **call Elizabeth on 07742 594322**

Email Liz.churchill@outlook.com



Crudwell Village Hall

The village hall has a vending machine! On the eastern face of the hall – next to the bike repair station - you'll now find a machine with a range of snacks, drinks, and essentials.

The provider will be tracking consumption to see what's popular but, on the vending machine you'll see a phone number that you can message, not only to report any issues, but also to make suggestions for the kinds of products you'd like to be available.

The other significant news from the month is an update following our AGM. Huge thanks to those of you who came along to contribute to proceedings. If you'd like to see the minutes from the meeting, please let us know but, in the meantime, trustees were re-elected with just one change. The roll-call reads: Phil Buxton (chair), Annie Smith (treasurer and bookings secretary), Jen Wilson (secretary), Damian Gilmartin (chair of fundraising), Tom Roberts, and [new Trustee] Kelly Hastings-Trew. Nigel Kelly is our other committee member helping especially with maintenance. My thanks to all for giving up their valuable time to run, maintain, and improve this vital village asset.

You'll also notice that our new goals have finally been installed. Huge thanks to the guys who came along to help with this big job, especially Richard Franklin whose kit and knowledge we could not have done without. We'll get to work adding the nets and marking out the pitch next.

There's still lots to do, starting with picnic tables and benches and more tree and flower-planting. If you'd like to come join us, please let me know.

Phil Buxton, chair, Crudwell Village Hall Committee.

chair@crudwellvillagehall.org

Crudwell Village Hall is a great venue for a variety of functions including children's parties, wedding receptions, meetings presentations, as well as activities and clubs.

For availability, bookings and more general information, head to our website or email bookings@cvhrg.org.uk



Parish Council May

Parish Council

The Parish Council last met on Tuesday the 18th of March 2025. Meeting minutes are published on our website at: <http://www.crudwell-pc.gov.uk/category/agenda/> together with the agenda for the Annual Meeting of the Parish Council which will take place at **7:00 PM on Thursday the 13th of May** in Crudwell **Primary School**. Public speaking is permitted during the first ten minutes of the meeting if you wish to attend.

Flood prevention and Crudwell Flood Action Group (FLAG)

A Parish Councillor continues to liaise with representatives of Crudwell FLAG to note progress on the issues listed and to report back to the Council. Specifically, we have:

- Cleared the main area of the Swillbrook at Tuners Lane by digging out and removing silt. We are planning further silt and vegetation removal up to the A429 road bridge.
- Communicated with local landowners reminding them of riparian responsibilities to ensure that watercourses on their land are well maintained where appropriate.
- Continued to liaise with Wiltshire Council to ensure that culverts and ditches within their jurisdiction are well maintained and specifically requested that the area under the A429 road bridge is cleared and maintained to a satisfactory standard.
- Obtained additional road signs and gel sacks which are available for use.
- Commenced our review of the Parish's Emergency Plan to ensure that all possible scenarios are covered.
- Ensured that a Parish Councillor liaises directly with a member of Crudwell FLAG with a monthly report back to Council meetings. You can find information in the Facebook group, or via: crudwellflag@gmail.com

Information for landowners re Riparian responsibilities can be found on our website at: <https://www.my-crudwell.org/2025/01/information-for-landowners-re-riparian-rights/>

Local Elections

On Thursday 1 May 2025, elections will take place for 98 Unitary Wiltshire Councillors and across the Parish and Town Councils in Wiltshire. Crudwell Parish Council is required to publish the Notice of Elections for Crudwell Parish Council (9 councillors).

There is a link below to our website which has:

- The Notice of Elections for Crudwell Parish Council (9 councillors).
- Further information about becoming a councillor.

www.crudwell-pc.gov.uk

Polling will take place in Crudwell Village Hall from 7am to 10pm.

Additional information is available on <https://www.wiltshire.gov.uk/local-elections>

Annual Parish Muck-in

Many thanks to Jono Stanford for arranging the Crudwell Muck in on the 31st of March and to those parishioners who took part. A total of 16 volunteers helped across Crudwell and Eastcourt to remove a total of 15 bags of litter from our village verges, by-way routes and walkways. Another good example of community spirit at work and it does make a great difference to our village.

Roy F Hamilton-Lambley; Chairman, Crudwell Parish Council

Neighbourhood Plan May

2031 Neighbourhood Plan Allocation; Tuners Lane

An exhibition of the final designs for the Tuners Lane site was held at the Village Hall on the 27th of March where 38 Crudwell residents attended and were able to discuss the plans with representatives of the site agents. Meanwhile, the Planning Application remains under consideration by Wiltshire Council.

2038 Neighbourhood Plan Review

We have now reviewed the comments received in respect of our recent survey seeking your views on our proposals for the allocation of further development sites in Crudwell to meet the new government housing targets. It is necessary to allocate small sites for sufficient development to prevent much larger speculative applications by developers which would not be sustainable in Crudwell. Thank you for your comments summarised below, which we will respond to individually and review as part of our Regulation 14 compilation work.

- *Ensuring good engineering to mitigate flood risk is at the heart of any new development, consideration of using development funding for flood preventative measures.*
- *Traffic calming and/or extended footpath access in Tetbury Lane.*
- *Provision of market affordable smaller houses rather than large executive homes to encourage young families keeping the village and school vibrant and growing rather than stagnating.*
- *Consideration of high-tech small over 50's units to encourage downsizing.*
- *That we should consider alternative sites (editors NB; only two deliverable sites were offered in the call for sites)*
- *Ensuring that local infrastructure needs (eg local schools, doctors' surgeries and dentists can cope with the increased population demands.*
- *Offers of additional sites for future developments within the scope of the plan were made*

We have submitted the detailed plans of our potential policy sites to Wiltshire Council who will carry out a Strategic Environmental Assessment (SEA) screening exercise prior to a full SEA if required. The housing sites as reported previously are located at Carpenters Yard and land behind Chapel Way.

We have carried out an additional topographic survey on the northern Glebelands and the adjacent A429 road as requested by Wiltshire Council as part of our feasibility study for a potential parking facility in the northern Glebelands. This is needed to alleviate congestion by the school and village green. This proposal may be included as an allocation policy, subject to the appropriate permissions.

A first draft of our required Crudwell Design Code has now been delivered for consultation by the commissioned architectural consultants and a consultation exhibition was held at the Village Hall on April the 21st. The draft code will be available shortly for your review on our website at <https://www.crudwell-pc.gov.uk> together with an online form for your comments.

The next formal consultation called Regulation 14, on all of the draft policies in the Plan, will take place later this year. **Cllr. Roy F Hamilton-Lambley, Chairman; Crudwell Neighbourhood Plan Steering Group**

Greetings from All Saints Church

May Thoughts

Whether you believe in a god or not, the Bible helps us live our lives in a better way. As we get older, we start to look back at our lives and want to remember what has happened. When we are at our lowest, it is also good to know that there have been special times in our life.

Abraham, that amazing man who God appeared to, has a lot to teach us. It is said in the Bible (Genesis 12:6-7) that when God spoke to him Abraham would build an altar at that point as a physical reminder of what had been done or said. Years afterwards, he and his descendants would come across these altars and remember what God had done.

We human beings often forget the good times we have had; even the prayers we have uttered a long time ago. We need to have reminders, so I suggest that as you go through life, make time to write down or take a picture of something that has inspired you and keep them together so that later on you can look back at them. These items of remembrance can uplift us when we are low and can remind us that we matter.

May you, as you journey through life this Eastertide, find love, peace, joy and knowledge that you matter and are part of a wonderful creation full of colour and scent.

Amen

Revd. Sarah Wyman

CRUDWELL SCHOOL 100 CLUB

The 100 Club started in June 1996 and since then has raised thousands of pounds for the primary school. For a cost equivalent to just £1 a week, each entry has the chance to win the monthly prize of, currently, £100. All profits are used to provide for the school and membership is open to anyone over the age of 16. The more entries we have, the more money is raised for the school!

For more information including details of how to join, please visit:

www.crudwellprimary.co.uk/100-club Thank you!

The Governing Body of Crudwell CE Primary School is registered with Wiltshire Council to run small society lotteries under the Gambling Act 2005, registration number LN/000010738

Promoter: Corrie Darker, Crudwell CE Primary School, Crudwell, Malmesbury, SN16 9ER

Crudwell Ladies

Our April meeting was given by one of our members, Pam Baldry who told and showed us how glass had many uses, decorative, medical and practical, bringing along some of her own collection. Thank you Pam - it was so informative and interesting.

On **Wednesday, 14th May** we are having a trip to **Sherston** for a short, guided tour and then on to the **Angel Cafe** in the High Street for tea and lovely cakes. We are meeting at our **Village Hall at 2pm** and members have offered to drive anyone who needs a lift to Sherston.

Our membership is not restricted to ladies living in Crudwell and members are very welcome to bring along a guest, for which we make a small charge of £3, with members paying £15.

Please see the Village Calendar on the back page for future events and contact details.

North Wilts Flower Club

On 16th April we had Jenny York with her designs called "Out of Africa". Jenny was a diplomat and speaks very well about flowers as well as demonstrating beautifully how she does them. As always, we raffled them at the end.

On May 13th we are joining with Wootton Bassett Flower Club to visit Salisbury Cathedral Flower Festival. You are welcome to join us for a small fee. We meet at 8.30 in the carpark at the Old Station Yard in Malmesbury for the coach. There will also be cars available. Do let us know if you want to come.

We have free tea/coffee and cake at the end. We are a friendly group of people who just love flowers. We include folk who are experienced and folk who are not, so do give us a try.

See village calendar for further dates and contact details

Coffee n Chat

We will be welcoming our Neighbourhood Policing team to our coffee morning in Crudwell Church on Wednesday 14 May. They will be with us between 10.30 - 11.30 and are interested to hear any views or questions about what matters in our community. There will be the usual raffle and refreshments continuing to 12 noon and funds raised go towards our church building and maintenance of the lovely churchyard. All are welcome from Crudwell and beyond.

Please contact Rosemary Williams for information on 01666 575073

Short Mat Bowls

The winter season is now very nearly over. We play for the Stevens Cup against the top two teams in the Central and South area teams plus Marshfield who finished second in the North League. Hopefully, on 27th April we can bring the season to an excellent end. In the past few weeks, we have beaten Market Lavington both home and away to take the County Summer League title. In the Malmesbury League, club members reached both the Pairs and Triples finals - well done Brian R, Julia and Geoff for their triples win and commiserations to Julia and Geoff losing pairs finalists.

We will soon be fixing our Summer League fixtures and the whole process will start again. Our new mats are 'bedding in' and we are beginning to play more consistently on them.

Please note that our Thursday afternoon session times have altered. From 24th April we will now start at 3.30pm and finish at 5.30pm.

As always, if you fancy having a go just come into the Village Hall - 7pm on Tuesday evenings and 3.30pm on Thursdays. Bring flat shoes; we have the rest.

See the Village Calendar on the back page for more details.

Geoff

Girls' Rugby

Girls Rugby at Tetbury RFC is flourishing.

On 23rd March, we had a Girls Rugby Day at Tetbury RFC. A dozen girls from years 3 – 9 turned up to give rugby a go and all left with a beaming grin! After that, our U11 (Year 6) girls played a great game against Chosen Hill RFC from Gloucester, coming out just on top. The Tetbury U14's took on Melksham in their league match which was another closely fought game with lots of great rugby action, losing Malmsbury by just three points.

On 24th March, some of our Tetbury U16 girls represented School in the National Inter School Rugby Sevens tournament at Rosslyn Park, with three of the girls being scouted for future rugby development pathways.

If you are interested in finding out more, contact Leon Horton (coach)

leonhorton82@gmail.com or Claire Williams (club secretary)

clubsecretary.tetburyrfc@gmail.com

Badminton

Crudwell Badminton Club welcomes players of all abilities to its Monday evening sessions at the Village Hall. Don't worry if you've never played before – we are happy to teach! If you'd like to join us for an evening free of charge, email hilarywarner62@gmail.com.

Tai Chi

Our weekly Tuesday Tai Chi classes continue to be very popular, and all are welcome to attend. Tai Chi is recommended as a proven way of improving our concentration, balance and co-ordination. The exercises can be done standing or sitting and are done to a background of very gentle music. It costs just **£7** for an hour on a pay as you attend basis.

See village calendar for further details

WE ARE RELOCATING to a bigger and better premises.

The same team, in a bigger premises, with more services to offer!



Where have we moved to?

You can find us at Unit 4, Whitewalls Industrial Estate, Easton Grey, Malmesbury, SN16 0RD. Contact us as before on **01666 577 242** and service@crudwellgarageltd.co.uk

Can't get to us? - Free collection and delivery available

We hope to welcome you to our new facility soon and thank you for your continued support.



Crudwell Honey

Prize winning local honey produced by bees foraging in and around Crudwell and Malmesbury. £6 for 340g (12oz) jar.

Please contact Tim Bullock: 07530 627062

tim.bullock1797@gmail.com.



Crudwell Honey



T.M Installations

Plumbing and Heating Engineer

Reliable and Local – No job too small
From leaky taps to full bathroom renovation
Tiling service also available

Tom Murphy

Tel: 01666 577170 07766614606



Talking Wines

Independent Wine Shop

Hundreds of wines available

3 Emmervale Court, Midland Rd
Cirencester GL7 1P

01285 650 250 Andrea@talkingwines.co.uk

Cotswold Vans

A VAN FOR EVERYONE



We provide a wide range of high quality, reliable and affordably priced vans.

Open 7 days a week.

***Call us on 001285 600202 or email
cotswoldvans@outlook.com***

JAGGED EDGE DESIGN LTD

ARCHITECTURAL DESIGN SPECIALISTS

We specialise in bringing considered design to new build domestic houses, extensions and refurbishments.

*We offer a comprehensive, professional service covering -
Design, Planning, Building Regulations, and if you wish Project Management.*

Call Gary or Andrea Lawes on - 01285 841317
or email info@jaggededgedesign.co.uk
www.jaggededgedesign.co.uk



STABLES TO LET EASTCOURT, MALMESBURY

EXCELLENT FACILITIES INCLUDE:

Stables within a large barn
Quiet Location
All Year Turn Out
Tack Room & WC
Outdoor School 30m x 50m with Lights
All Weather Lunging Ring
Horsewalker
Wash Down Area
Lorry Parking

CONTACT: Sara Palmer on 01666 577699 / 07974021006



TETBURY GOODS SHED

ARTS CENTRE

GOODS SHED HIGHLIGHTS FOR MAY



- May 2 Deeper Purple: The band deliver the most authentic tribute to the giants of classic rock that have influenced generations of musicians and music fans for over 50 years. Tickets £22 in advance. 7.30pm
- May 10 Red Priest: Following their last, sold-out, appearance at the Goods Shed, be prepared for another stunning programme of classics arranged in their own unique way. Tickets £24 in advance. 7.30pm
- May 17 Drawing Class with Claire Sanders; Whether you are looking to hone your skills, re-ignite old enthusiasms, or have a go at something new, you will come away feeling refreshed and inspired. Tickets £20. 10am
- May 17 The Haar: This folk band of high-level improvisers produce ever-changing musical soundscapes, while Molly Donnery lets her sublime vocals flow to stunning effect. Tickets £16 in advance. 7.30pm
- May 24 Julie July Band Acoustic: With over a decade of gigging and recording experience, Julie July Band make their debut performance at Tetbury Goods Shed. Tickets £14.50 in advance. 7.30pm
- May 28 Playtime Theatre; A play-along theatre adventure for 2-6-year-olds and their grown-ups. This month: “A Woodland Wonder” – join Ratty as she learns about the environment. Tickets £5 under 1s free. 10am

Check our website for further details of films, Wednesday afternoon concerts, exhibitions and talks and to book tickets

www.tetburygoodsshed.co.uk

What's on in Crudwell?

May Village Calendar

All Saints Crudwell	Friends and Family	All Saints Church	Sunday 4 May 10.00
	Holy Communion		Sunday 25 May 11.00
	<i>Please visit our website www.braydonbrook.co.uk and Braydon Brook Churches Facebook Page to find out more.</i>		
Arty Moose <i>Art club for 5-11s</i>	Gillian 07843271517	Crudwell Village Hall	Wednesdays (term time only) 16.00 – 17.30
Coffee 'n' Chat	Rosemary Williams 01666 575073	All Saints Church	14 May 10.30 – 12 noon
Crudwell Badminton Club	hilarywarner62@gmail.com.	Crudwell Village Hall	Mondays 19.30 – 22.00
Crudwell Ladies	Judy Paginton 577370 Margaret English 577572	Crudwell Village Hall	14 May 7.00 for 7.15
		The Wheatsheaf	28 May 10.30
Crudwell Parish Council Meeting	Roy F Hamilton-Lambley roy.lambley@gmail.com	Crudwell School	13 May 19.00
Crudwell Pre-School	Cathy 07986622191 info@crudwellpreschool.co.uk	Crudwell Village Hall	Mon/Weds/Thurs/Fri 9.00 – 15.00
Crudwell Scouts And Explorer Scouts	crudwellscouts@gmail.com	Crudwell Village Hall	Thursdays 19.00 – 21.00 Scouts 19.00 – 21.30 Explorers
Crudwell Short Mat Bowls	Anita 07977566883 or Geoff 07400266866.	Crudwell Village Hall	Tuesdays 19.00 - 21.30 Thursday 15.30 – 17.30
Netball for All	Debbie Gregory 07880 606702	Multi- sports facility	Mondays 18.00 -19.00
The Arts Society Malmesbury <i>Lecture series</i>	The Jewel in the Crown: Sir Edward Lutyens and the Viceregal Lodge New Delhi info@theartsocietymalmesbury.org.uk	Crudwell Village Hall	13 May 13.45-16.00
North Wilts Flower Club	Cathy Carroll 07703299277 carrollcath@aol.com https://www.facebook.com/northwiltshirevilla_gesflowerclub	Crudwell Village Hall	No evening meeting.
Rugbytots <i>Sport for 18 months to 6 years old</i>	Email Kimberley Robson northwestwilts@rugbytots.co.uk	Crudwell Village Hall	Saturdays 8.30 onwards various sessions
Tai Chi	Carmel Straughan 577502 Margaret English 577572.	Crudwell Village Hall	Tuesdays 11.30 - 12.30
Totally Tennis	Annie Smith anniebsmith@hotmail.co.uk	Multi- sports facility	Tuesdays 17.00

Post Office Monday and Tuesday 2.00pm - 5.30pm, Wednesday 9.00am-12.30pm

Collection time 4.45 pm Contact 01666 577201.

Mobile Library 11.10-11.45 am The Dawneys, Crudwell Friday 23 May

Defibrillator locations: Village Hall (Code C123X) and Wheatsheaf Inn (C159X) BT telephone box, Eastcourt