

# What's on in Crudwell

Issue 105 August 2025



**My CRUDWELL**  
A COMMUNITY PUBLICATION

## **Malmesbury Pharmacy**

Change of hours

Mon-Fri 9am-9pm

Saturday 10am-  
8.30pm

Sunday 10am-4pm

## **Village Bulletin Board**

See village calendar  
on back page for regular  
events

## **Crudwell Post Office**

will be closed  
1 September  
for two weeks  
Reopens 15 Sept

## ***MacMillan Coffee Morning***

Friday 26 September  
10.30 - 12.00pm  
All Saints Church  
Crudwell

## **Athelstan Pilgrim Way Walk**

Sunday 7 September 2pm

All Saints Crudwell - Holy  
Cross Hankerton

See page 11

## **North Wilts Villages Flower Club**

Summer Door  
Decoration Workshop

Wednesday 20 August  
4 - 6 pm

See page 8

Email us at [woicrudwell@gmail.com](mailto:woicrudwell@gmail.com) with all your  
village news and events

— The —  
**WHEATSHEAF INN**  
CRUDWELL

Seasonal summer salads  
and ploughman's  
throughout the summer months



Bookings now being taken

01666 577739

[tobygregory@aol.com](mailto:tobygregory@aol.com)

Our usual full menu will also be  
available.

# MURCOTT FARM SHOP

OPEN 7 DAYS

MILK

FRESH BREAD

EGGS

COFFEE & HOT DRINKS

SOFT DRINKS

CAKES & PASTRIES

PIES

SAUSAGE ROLLS,

SCOTCH EGGS

FRESHLY MADE SALADS

MEAT

FISH

VEGETABLES

HAND MADE PASTA & SAUCES

PICKLES & CHUTNEYS

WINE & BEER

FREEZER MEALS

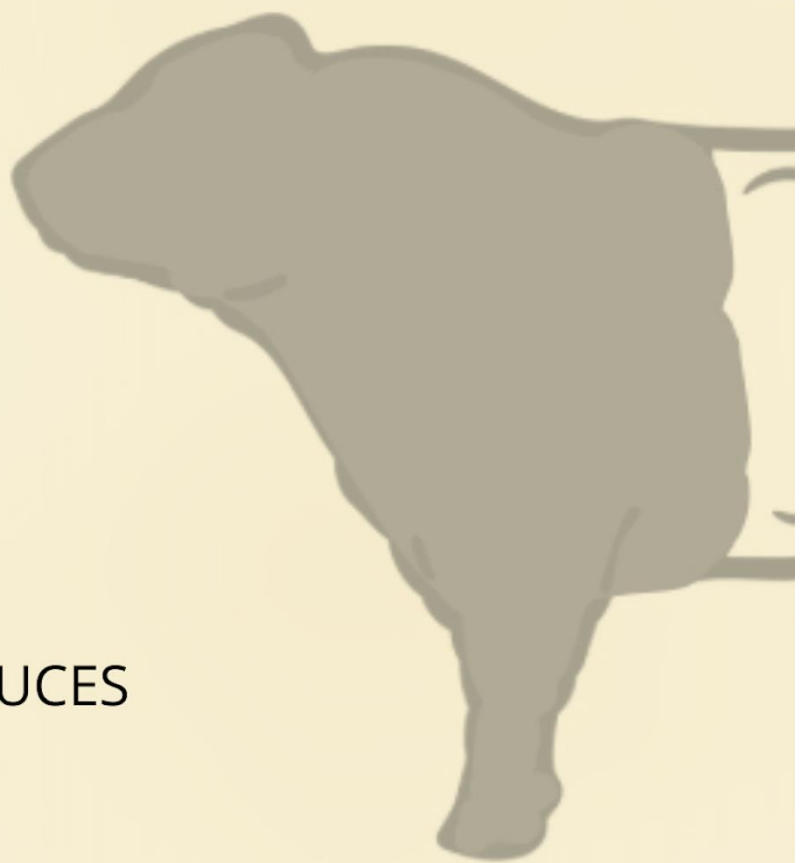
CHARCUTERIE

CHEESE

CHOCOLATE TREATS

FERMENTED FOODS

PET FOOD & MUCH MUCH MORE...



# Parish Council August

Following the Wiltshire Council Local Elections in May and our publication of three vacancies, we are pleased to welcome Charlotte Bullock, who has been co-opted as a Parish Councillor. The Council now has two remaining vacancies for Councillors which can be filled by co-option. We are seeking individuals who can commit to monthly Parish Council meetings and have an interest in local issues, planning, finance, local area improvements etc. For further information please contact the parish clerk (Lisa Dent) on [parish.clerk@crudwell-pc.gov.uk](mailto:parish.clerk@crudwell-pc.gov.uk).

**Parish Council Meetings:** The last meeting of the Council took place on Thursday 26<sup>th</sup> of June. All meeting minutes are published on our website at: <http://www.crudwell-pc.gov.uk/category/agenda/> together with the agenda for the next meeting of the Parish Council which will take place in Crudwell Primary School at 7pm on Thursday 31<sup>st</sup> July. Public speaking is permitted during the first ten minutes of the meeting, if you wish to attend.

**Parish Clerk leaving:** As we have previously reported, our Parish Clerk Lisa will be leaving us in the summer after ten years of dedicated service to the Council and our community. Having advertised the post widely, we are now undertaking the recruitment process for a new clerk and are interviewing applicants with a view to an appointment during August.

## **Flood prevention and Crudwell Flood Action Group (FLAG)**

The Council continues to work closely with this group and two Parish Councillors liaise with the representatives of Crudwell FLAG to note progress on the issue lists and to report back to the Council.

We have sought quotations from suitable companies to excavate and clear the silt from the Swillbrook leading up to the A429 road bridge and expect to award this contract shortly. Further to this, we have requested that Wiltshire Council clear the area under the bridge and beyond to the footbridge which falls within their riparian responsibility, or to grant authority for that work to be carried out.

A meeting and site visits recently took place in Crudwell with Wiltshire Council's Drainage Engineer to review our watercourses with a view to identifying improvements to help promote flood prevention in future. The meeting was attended by Parish Councillors together with members of Crudwell FLAG and a range of further actions to identify and plan future flood prevention measures were agreed.

You can find information on Crudwell FLAG in the Facebook group, or via: [crudwellflag@gmail.com](mailto:crudwellflag@gmail.com)

Information for landowners re riparian responsibilities can be found on our website at: <https://www.my-crudwell.org/2025/01/information-for-landowners-re-riparian-rights/>



### **Community Activity**

It is always gratifying to see great community spirit in Crudwell and we would like to thank the organisers and those who worked hard to make our recent events so successful.

- The **Strawberry Fayre** which raised money for our Parish Church
- **Crudwell 24hr bike ride** which raised money for our Village Hall
- The **Vehicle Extravaganza** at The Old Dairy and Hayleaze Farm which brought an amazing number of supercars together with heritage tractors, lorries and classic cars. This event raised money for our Parish church and the Village Hall park project.

While additional funds are of course always welcome, the community engagement which happens at these events is equally important. Well done all!

***Roy F Hamilton-Lambley; Chairman, Crudwell Parish Council***

On behalf of the **Crudwell Strawberry Fayre**, many thanks for your help and support of the 2025 fayre.

Whether you came to eat strawberries, baked shortbread, made a cake, donated a plant or book, hulled and served so many strawberries or helped in the setting up and dismantling, we are most grateful.

It was wonderful to come together as a community to enjoy this unique event which raised funds for All Saints Parish Church.

We hope we can count on your support for future fayres to continue this great tradition.

**Angela King**

## **2031 Neighbourhood Plan Allocation; Tuners Lane**

The Planning Application remains under consideration by Wiltshire Council. A decision is anticipated in the near future.

## **2038 Neighbourhood Plan Review**

- A further landowner's agent has now made an application to include a development of 40 dwellings as a potential site allocation in the current NP review and has presented outline plans for consideration. This proposal will be examined by the Steering Group to determine potential sustainability and deliverability together with the Chapel Lane and Carpenters Yard proposals. Following the initial analysis, we will host a public consultation event to test local opinion and any preferences.
  - Following submission to WC Highways of the requested topographic survey of the northern Glebelands and A429 access to establish the feasibility of the site for additional school parking, an initial response has been received indicating that access for limited parking may be possible. We are considering our response and will consult with the School Headmaster and Governors to determine the next steps. We are continuing to pursue the possibility of a new pedestrian access to the school playing fields via an upgraded footpath CRUD7.
  - We are awaiting Wiltshire Council decision on whether a Strategic Environmental Assessment will be required for our Reg 14 submission. This is a critical dependency and makes the timing of Reg14; the next formal consultation later this year somewhat uncertain.
  - We have now summarised your responses to the Crudwell Design Code consultation. The local responses will have been into the final version of the Code which will become part of the Reg 14 submission.

***Cllr. Roy F Hamilton-Lambley, Chairman; Crudwell Neighbourhood Plan Steering Group***



## Crudwell Ladies

Crudwell Ladies' visit to Cerney House gardens was a really interesting and lovely afternoon. The views from the top of the garden were of a lovely Cotswold village scene. It is definitely a garden to visit all the year round with so much hard work going into keeping it looking at its best. It was a very hot day so tea and cake was most welcome in the lovely cool Cotswold stone cafe. Many thanks to the volunteer drivers for taking us there.

On Wednesday 13th August we are going on a short walk around Malmesbury High Street, and of course – being Crudwell Ladies - we are having refreshments at Lalleys Tea Rooms. Transport arrangements will be made nearer the date.

All meetings start at 7pm with a 7.15pm start in Crudwell Village Hall. Our membership is not restricted to ladies living in Crudwell and members are very welcome to bring along a guest, for which we make a small charge of £3. Members pay £15 annually. We have refreshments and a raffle with the meeting finishing around 9.30pm.

Crudwell Ladies also meet in the Wheatsheaf every 4th Wednesday of each month from 10.30am through to noon. Our next get together will be on August 27<sup>th</sup>.

*Please contact either Judy Paginton – Treasurer on 01666 577370 or Margaret English – (Newsletter Secretary) on [margaretenglish261@btinternet.com](mailto:margaretenglish261@btinternet.com) or 01666 577572 for more details.*

## Coffee & Chat

Residents, neighbours and friends have appreciated the cool interior of Crudwell Church for our friendly, monthly coffee mornings during the hot weather! The next meeting is on Wednesday 13 August 10.30 - 12 noon to which newcomers are also most welcome.

As all funds raised from the raffle and refreshments go towards the church and churchyard maintenance, it was good to hear, at the July meeting, the recording of church bells ringing, which can now be offered for weddings and appropriate occasions.

*Contact Rosemary Williams for further information on 01666 575073.*

# North Wiltshire Villages Flower Club

Invite you to an afternoon

## Summer Door Decoration Workshop

Wednesday 20<sup>th</sup> August Crudwell Village Hall,  
4pm to 6pm

Open to all – No experience necessary

£5 Members £10 Visitors

Tea and Cake included + Raffle

Come and enjoy a creative, friendly afternoon making beautiful  
summer wreaths with guidance and inspiration. Bring a friend.

Families welcome too!

For more information on what to bring  
and to book your place please email

[nwvflowerclub@gmail.com](mailto:nwvflowerclub@gmail.com)





## Crudwell Ladies Lunch Club

The Lunch Club ladies meet regularly on the **3<sup>rd</sup> Monday of each month at the Rectory Hotel** and enjoy a very tasty 2-course meal in the conservatory. When the windows and doors are open on to the garden it is so lovely, but it's also cosy in the winter months. Our August meeting will be a garden visit and afternoon tea out - venue and lifts to be arranged. Plans for our future meetings, including outings and speakers are busily being arranged, so watch this space for news.

*Contact Maureen Stephens on 07552 233293 for more details.*

### Tai Chi

Thanks to the fans in the Village Hall, we have managed to keep very cool during the recent hot weather.

Everyone is welcome to attend the gentle Tuesday sessions 11.30 – 12.30. It costs just **£7** for an hour on a pay as you attend basis.

For further information, please contact either:

*Carmel Straughan on 577502 or Margaret English on 577572.*

### Badminton

Crudwell Badminton Club welcomes players of all abilities to its Monday evening sessions at the Village Hall. Don't worry if you've never played before – we are happy to teach! If you'd like to join us for an evening free of charge, email [hilarywarner62@gmail.com](mailto:hilarywarner62@gmail.com).

## North Wilts Flower Club

Here's a quick round-up of our recent and upcoming events.

At our July meeting we welcomed Beverly Clay with her take on "Here Comes Summer" and raffled her lovely flower displays.

On August 20 we have our Summer Door Decoration Workshop – please see the poster for further details.

Our AGM takes place in September and will be followed by a talk by Andrew Tolman.

Then we have our Open Evening with Katherine Kear entitled "Myths, Mince and Merriment" on 19<sup>th</sup> November at Malmesbury Town Hall.

Remember your first visit is free (except the workshop) so do come along.

*Cathy Carroll*

# Greetings from All Saints Church

For all of us, life throws up challenges and blessings, joys, and sometimes sorrows, at the same time.

So it was, this weekend.

We have had the wonderful Minety Music Festival featuring great bands and a Sunday service enhanced by the enthusiastic performances of pupils from Minety Primary School. We have had the gorgeous relaunch of the Strawberry Fayre in Crudwell in which the village green was transformed by gazebos and marquees, tables and chairs, bunting, strawberries, cream and - most importantly for both events – lots and lots of people, meeting, greeting and celebrating together!

Most inspiring to see was the way so many volunteers, young and old, threw themselves wholeheartedly into ensuring two beautiful and successful events.

In between responsibilities at these brilliant affairs, my wife, Dee and I, also sat at the bedside of two dying colleagues. Many of you will know *Colonel Nick Mangnall* of Oaksey and *Richenda Milton-Daws* of Lee. As churchwarden and Licensed Lay Minister respectively, they both faithfully served the Lord, the Benefice and the community, for many years, and leave behind an incredible legacy.

We feel their loss acutely, and will, I fear, feel it more as the reality of their absence hits home, but we take deep comfort from the knowledge that they are in the presence of the Lord they served.

In Malcolm Guite's beautiful words,

'...death itself is made the catalyst Of Life eternal.'

And, as Julian of Norwich so resonantly said, 'All shall be well and all shall be well and all manner of thing shall be well.'

So, we mourn and our mourning is a measure of our love, but we raise our eyes to the One who loves us and who reassures us that,

*"No eye has seen, nor ear heard, nor has the human heart conceived, what God has prepared for those who love him"* 1 Corinthians 2 vs 9.

We believe.

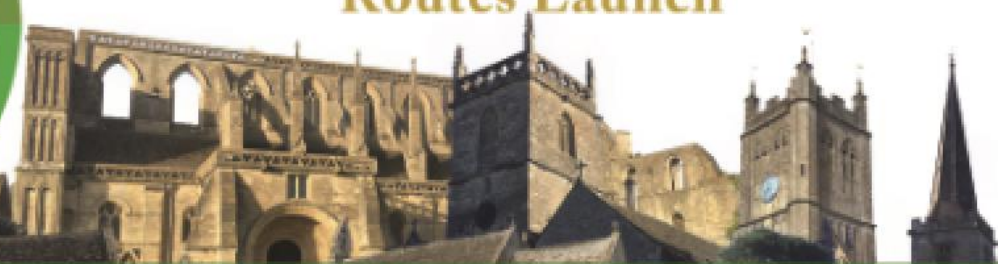
We give thanks for all those volunteers in our communities who made such lovely events happen over the weekend and we also give thanks for the lives of our friends and for their God and ours, who is with us in sorrow and in joy.

Reverend Bob and Dee

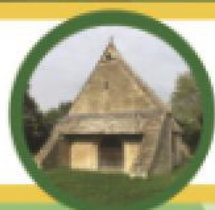


# ATHELSTAN PILGRIM WAY

## Braydon Brook & Upper Thames Routes Launch

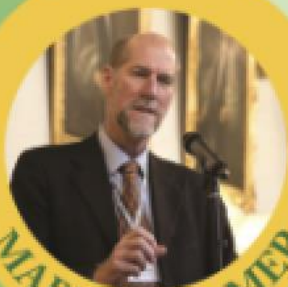


# 6th September 2025



**11.30am Pilgrimage Walk**  
from the Leigh Chancel (SN6 6QY) to Cricklade

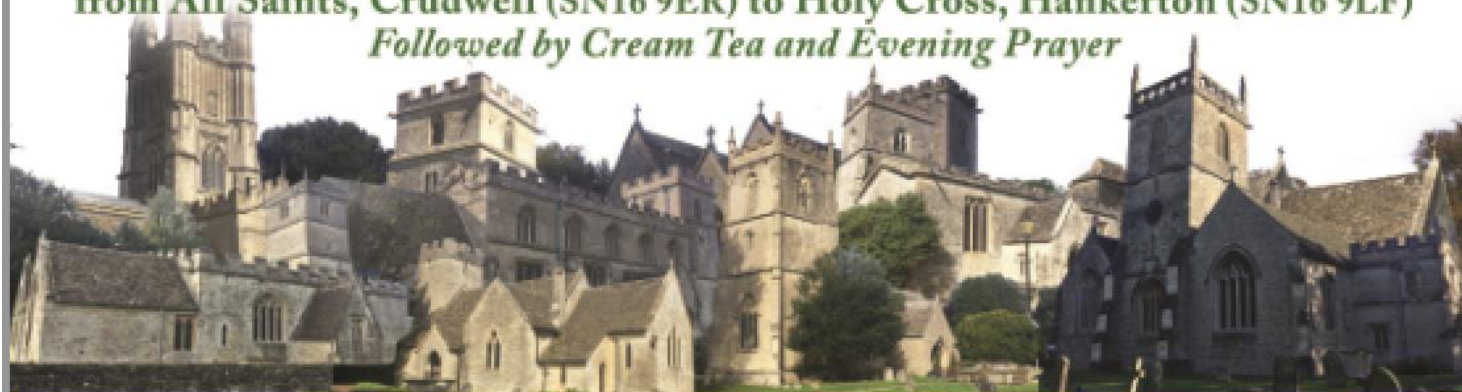
**2.30pm St Sampson's Church  
Cricklade (SN6 6AT)**  
Ticketed event with guest speaker  
**Martin Palmer**



MARTIN PALMER

**TICKETS: £10.50 adults (children free)**  
available from 14th July 2025 from Cricklade Town Hall  
and also online via [www.athelstanpilgrimway.org](http://www.athelstanpilgrimway.org)

**PLUS: the walk continues ... 7th September 2pm**  
from All Saints, Crudwell (SN16 9ER) to Holy Cross, Hankerton (SN16 9LF)  
*Followed by Cream Tea and Evening Prayer*



The Athelstan Pilgrim Way is a walking & cycling route linking 36 churches across the North Wiltshire Deanery



North Wiltshire Mission Area  
Diocese of Bristol

[www.athelstanpilgrimway.org](http://www.athelstanpilgrimway.org)



Crudwell Village Hall is a great venue for a variety of functions including children's parties, wedding receptions, meetings presentations, as well as activities and clubs.

There is a large fully equipped kitchen, refitted and refurbished facilities, a large hall with a capacity of 150 to 200 people, meeting room, large playing field and a children's playground adjacent to an outdoor fitness area. The hall has free Wi-Fi and drop-down projector screens.

For availability, bookings and more general information, head to our website or email [bookings@cvhrg.org.uk](mailto:bookings@cvhrg.org.uk)



## Crudwell Multi-Sports Facility

- The courts were built to play tennis, netball, basketball and 5/side football.
- There is **no charge** for the use of the courts.
- **Maintenance costs are funded entirely by donations, which can be made at The Wheatsheaf, Crudwell Post Office or online by bank transfer. A suggested donation could be £10/hour per court.**
- If you play regularly, please consider joining our **subscription scheme** for a donation of **just £5/month**.
- Help keep the courts in good condition especially **NO WHEELS ON THE COURTS!** Thank you.

**Crudwell Recreation Action Group (CRAG)**  
part of the Crudwell Village Hall & Recreation Ground  
charity no.294177  
Email  
[bookings@cvhrg.org.uk](mailto:bookings@cvhrg.org.uk)  
for more information.

Netball for all takes place from 6pm to 7pm on Mondays. Phone **Debbie on 07880 606702** for more information.

On Tuesdays, it's tennis starting at around 5.00pm and we have a WhatsApp group to confirm if we have enough people to play. [anniebsmith@hotmail.co.uk](mailto:anniebsmith@hotmail.co.uk)

## WE HAVE RELOCATED to a bigger and better premises.

The same team, in a bigger premises, with more services to offer!

### Where have we moved to?

You can find us at Unit 4, Whitewalls Industrial Estate, Easton Grey, Malmesbury, SN16 0RD. Contact us as before on **01666 577 242** and [service@crudwellgarageltd.co.uk](mailto:service@crudwellgarageltd.co.uk)

**Can't get to us?** - Free collection and delivery available

We hope to welcome you to our new facility soon and thank you for your continued support.





# The Calm Clinic Malmesbury Solution Focused Hypnotherapy

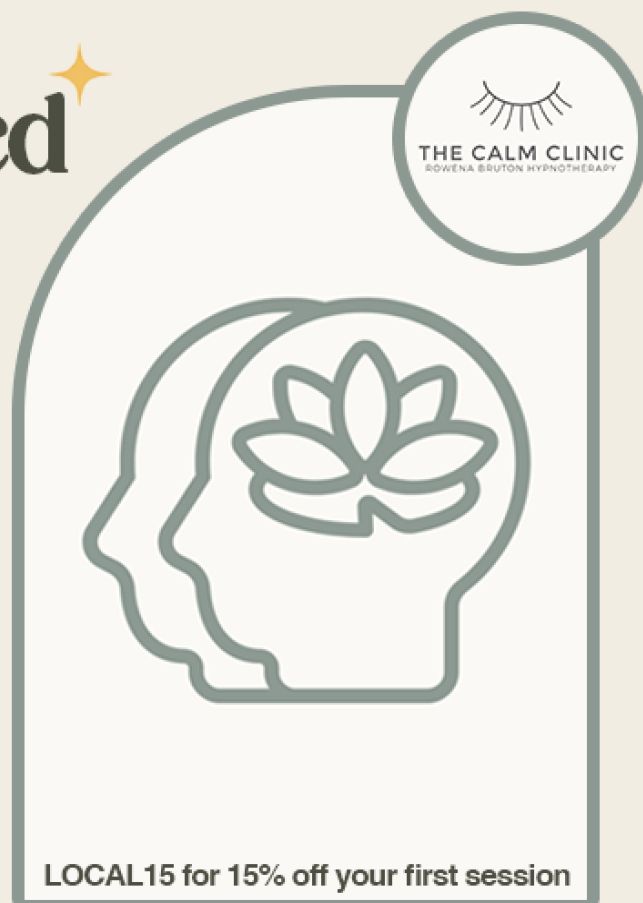
*Struggling with anxiety, stress,  
low confidence or feeling stuck?*

At The Calm Clinic, we use Solution Focused Hypnotherapy, which is a lovely combination of talking therapy and gentle hypnosis designed to retrain your brain, shift negative thinking, and help you build the calm, confident life you want.

- **Overcome anxiety and panic**
- **Manage stress and sleep better**
- **Build confidence and self-esteem**
- **Let go of fears and phobias**
- **Gain control of your thoughts**



[www.thecalmclinic.co.uk](http://www.thecalmclinic.co.uk) - [Info@thecalmclinic.co.uk](mailto:Info@thecalmclinic.co.uk)



## FRENCH/GERMAN LESSONS

Tuition given in either French or German, any level, beginners to A level, by experienced language teacher.

- **Oral practice in preparation for exams**
- **Adult conversation classes**
- **Help with grammar**
- **Individual or small group lessons**

For more information call Elizabeth on 07742 594322

Email [Liz.churchill@outlook.com](mailto:Liz.churchill@outlook.com)



### STABLES TO LET EASTCOURT, MALMESBURY

#### EXCELLENT FACILITIES INCLUDE:

- Stables within a large barn
- Quiet Location
- All Year Turn Out
- Tack Room & WC
- Outdoor School 30m x 50m with Lights
- All Weather Lunging Ring
- Horsewalker
- Wash Down Area
- Lorry Parking



CONTACT: Sara Palmer on 01666 577699 / 07974021006



# JAGGED EDGE DESIGN LTD

## ARCHITECTURAL DESIGN SPECIALISTS

*We specialise in bringing considered design to new build domestic houses, extensions and refurbishments.*

*We offer a comprehensive, professional service covering - Design, Planning, Building Regulations, and if you wish Project Management.*

Call Gary or Andrea Lawes on - 01285 841317  
or email [info@jaggededgedesign.co.uk](mailto:info@jaggededgedesign.co.uk)  
[www.jaggededgedesign.co.uk](http://www.jaggededgedesign.co.uk)



## Crudwell Honey

Prize winning local honey produced by bees foraging in and around Crudwell and Malmesbury. £6 for 340g (12oz) jar.

Please contact Tim Bullock: 07530 627062

[tim.bullock1797@gmail.com](mailto:tim.bullock1797@gmail.com).



Crudwell Honey



## T.M Installations

Plumbing and Heating Engineer

Reliable and Local – No job too small  
From leaky taps to full bathroom renovation  
Tiling service also available

Tom Murphy

Tel: 01666 577170 07766614606



## Talking Wines

Independent Wine Shop

Hundreds of wines available

3 Emmervale Court, Midland Rd  
Cirencester GL7 1P

01285 650 250 [Andrea@talkingwines.co.uk](mailto:Andrea@talkingwines.co.uk)

# TETBURY GOODS SHED

A R T S C E N T R E

## HIGHLIGHTS FOR JULY AND AUGUST



- July 5**      **Alfie Moore: A Face For Radio:** a surprising career shift in his mid-40s turned Alfie Moore from a street cop to the star of his own Radio 4 show “A Fair Cop”. It proved an immediate success and his wealth of hilarious stories come from experiences you couldn’t make up! Tickets £18 In advance. 8pm
- July 25**      **The Wild Robot (U):** A children’s showing of an adaptation of Peter Brown’s New York Times bestseller, *The Wild Robot*. Follow the adventures of Roz the Robot shipwrecked on a desert island. Tickets £7.50 in advance. 6pm
- July 26**      **Jazz with BD Lenz Trio and guest Kim Cypher:** Enjoy an evening of jazz, blues funk and soul with the acclaimed guitarist and his popular guest. Tickets £15 in advance. 7.30
- August 16**      **As You Like It - Festival Players Open Air Shakespeare:** Probably the bard’s most entrancing performance of mistaken identity and romance in the forest is ideal for a summer evening. Tickets £17 in advance. 7pm
- August 31**      **Off The Rails:** Our popular summer festival day for all the family with music, story-telling, impromptu entertainers, street food and a beer tent....all we need is you! Tickets £8.50 in advance, under 18s free. 11-6.

**For more details of our other events including film, talks, exhibitions, and afternoon tea concerts and to book tickets visit our website:**

**[www.tetburygoodsshed.co.uk](http://www.tetburygoodsshed.co.uk)**

# What's on in Crudwell?

## August Village Calendar

All Saints Crudwell	Friends and Family	All Saints Crudwell	Sunday 3 August 10.00
	Morning Praise		Sunday 17 August 9.30
	Holy Communion		Sunday 24 August 11.00
<b>Arty Moose</b> <i>Art club for 5-11s</i>	Gillian 07843271517	Crudwell Village Hall	Wednesdays (term time only) 16.00 – 17.30
<b>Coffee 'n' Chat</b>	Rosemary Williams 01666 575073	All Saints Church	13 August 10.30 – 12 noon
<b>Crudwell Badminton Club</b>	hilarywarner62@gmail.com.	Crudwell Village Hall	Mondays 19.30 – 22.00
<b>Crudwell Ladies</b>	Judy Paginton 577370 Margaret English 577572	Walk in Malmesbury	13 August
		The Wheatsheaf	27 August 10.30
<b>Crudwell Ladies Lunch Club</b>	Maureen <a href="mailto:Stephens.07552.233293">Stephens.07552.233293</a>	Garden visit Details tbc	18 August
<b>Crudwell Parish Council Meeting</b>	Roy F Hamilton-Lambley roy.lambley@gmail.com	Crudwell School	31 July 19.00
<b>Crudwell Pre-School</b>	Cathy 07986622191 info@crudwellpreschool.co.uk	Crudwell Village Hall	Mon/Weds/Thurs/Fri Term time only 9.00 – 15.00
<b>Crudwell Scouts And Explorer Scouts</b>	crudwellscouts@gmail.com	Crudwell Village Hall	Thursdays 19.00 – 21.00 Scouts 19.00 – 21.30 Explorers
<b>Crudwell Short Mat Bowls</b>	Anita 07977566883	Crudwell Village Hall	Tuesdays 19.00 - 21.30 Thursday 15.30 – 17.30
<b>Netball for All</b>	Debbie Gregory 07880 606702	Multi- sports facility	Mondays 18.00 -19.00
<b>The Arts Society Malmesbury</b> <i>Lecture series</i>	The Borgias The most infamous family in history <a href="mailto:info@theartssocietymalmesbury.org.uk">info@theartssocietymalmesbury.org.uk</a>	Crudwell Village Hall	No August event
<b>North Wilts Flower Club</b>	Cathy Carroll 07703299277 <a href="mailto:carrollcath@aol.com">carrollcath@aol.com</a> <a href="https://www.facebook.com/northwiltshirevillageflowerclub">https://www.facebook.com/northwiltshirevillageflowerclub</a>	Crudwell Village Hall	20 August Workshop 16.00 -18.00
<b>Rugbytots</b> <i>Sport for 18 months to 6 years old</i>	Email Kimberley Robson northwestwilts@rugbytots.co.uk	Crudwell Village Hall	Saturdays 8.30 onwards various sessions
<b>Tai Chi</b>	Carmel Straughan 577502 Margaret English 577572.	Crudwell Village Hall	Tuesdays 11.30 - 12.30
<b>Totally Tennis</b>	Annie Smith anniebsmith@hotmail.co.uk	Multi- sports facility	Tuesdays 17.00

**Post Office** Monday and Tuesday 2.00pm - 5.30pm, Wednesday 9.00am-12.30pm

Collection time 4.45 pm Wednesday **12.15** Contact 01666 577201.

**Mobile Library** 11.10-11.45 am The Dawneys, Crudwell Friday 22 August

**Defibrillator locations: Village Hall (Code C123X) and Wheatsheaf Inn (C159X) BT telephone box, Eastcourt**