



## VILLAGE BULLETIN BOARD

See village calendar  
on back page for regular  
events

**MacMillan  
Coffee Morning  
Friday  
26 September**

**See page 3**

**Crudwell Strawberry  
Fayre will be back**

**11- 12 July 2026**

***Quiz night in aid of  
Dorothy House  
Saturday 18 October***

***See page 3***

**Next year's 24-hour  
Bike Ride is on**

**20-21 June 2026**

**Don't forget  
Crudwell Post Office  
will be closed for two  
weeks from 1 September  
Reopens 15 Sept**

**Athelstan Pilgrim Way  
Walk**

**Sunday 7 September 2pm  
All Saints Crudwell – Holy  
Cross Hankerton**

**Please send all your village  
news and events to  
[woicrudwell@gmail.com](mailto:woicrudwell@gmail.com)**

**Many thanks!  
Katie Hawkins**

— The —  
**WHEATSHEAF INN**  
CRUDWELL

Seasonal summer salads  
and ploughman's  
throughout the summer months



Bookings now being taken

01666 577739

[tobygregory@aol.com](mailto:tobygregory@aol.com)

Our usual full menu will also be  
available.

**WE ARE  
MACMILLAN.  
CANCER SUPPORT**



**Friday September 26**

**10.30 – 12.30**

**All Saints Church  
Crudwell**

*Hosted by Diana Hodgson 07817  
242888 [dhodgson@live.co.uk](mailto:dhodgson@live.co.uk)*

*Donations of cakes, raffle prizes, produce or offers of help on  
the day, would be much appreciated.  
Payment by CASH preferred but we do have a QR code. (no  
card reader)*

**Quiz Night**

**Crudwell Village  
Hall**



**Saturday October 18      7.00 pm for 7:15**

£12.50 (includes ploughman's, tea / coffee)

BYO alcohol / glass

4-6 in a team

Tickets in advance only

**Tickets available from Judy Paginton**

01666 577370 / [jc.paginton10@btinternet.com](mailto:jc.paginton10@btinternet.com)

# Parish Council September

The Council has two remaining vacancies for Councillors which can be filled by co-option. We are seeking individuals who can commit to monthly Parish Council meetings and have an interest in local issues, such as planning, finance, local area improvements etc. For further information please contact the parish clerk (Caroline White) on [parish.clerk@crudwell-pc.gov.uk](mailto:parish.clerk@crudwell-pc.gov.uk)

## **We have a new Parish Clerk**

Parish Clerk Lisa Dent has now left us after ten years of dedicated service to the Council and our community. We wish her well as she furthers her career. Having advertised the post widely, we are pleased to have secured the services of Caroline White. Caroline was a strong candidate as an experienced Parish Clerk and is currently assimilating this key role for us. You can contact our Parish Clerk as previously by email at [parish.clerk@crudwell-pc.gov.uk](mailto:parish.clerk@crudwell-pc.gov.uk).

**Parish Council Meetings:** The last meeting of the Council took place on Thursday 31st of July. All meeting minutes are published on our website at: <http://www.crudwell-pc.gov.uk/category/agenda/> together with the agenda for the next meeting. The forward meeting dates will be published following the meeting on 28<sup>th</sup> August at Crudwell Primary School at 7pm. Public speaking is permitted during the first ten minutes of all meetings, if you wish to attend.

## **Flood prevention and Crudwell Flood Action Group (FLAG)**

The Council continues to work closely with this group and two Parish Councillors liaise with the representatives of Crudwell FLAG.

We have now had the area at Post Office Green leading to the A429 road bridge cleared of vegetation and silt build up. We have now also obtained permission from Wiltshire Council and the Environment Agency to clear the build up in the area under the bridge and beyond to the footbridge. Access to this by machine is not possible, so we have requested that FLAG consider whether a voluntary working party could undertake this manually. We are most grateful to the FLAG working party of volunteers who have done a great job clearing the drainage ditch between the school playing field and A429 footpath - great Crudwell community spirit in evidence again!

You can find information on Crudwell FLAG on Facebook or [crudwellflag@gmail.com](mailto:crudwellflag@gmail.com) Information for landowners re Riparian responsibilities can be found on our website at: <https://www.my-crudwell.org/2025/01/information-for-landowners-re-riparian-rights/>

***Roy F Hamilton-Lambley; Chairman, Crudwell Parish Council***

# Neighbourhood Plan September

## **2031 Neighbourhood Plan Allocation; Tuners Lane**

The Planning Application remains under consideration by Wiltshire Council, and we will update you as soon as possible when this status changes.

## **2038 Neighbourhood Plan Review**

The final version of the Crudwell Design Code and Guide has now been submitted to us for inclusion in the new Neighbourhood Plan. The document gives both instruction and guidance to developers of new housing or extensions to existing dwellings. This is a substantive document which we recommend that you should study if you are interested in how the village should be developed in the future. The Code, which has been produced via a Government Framework Contract at no cost to the Council, will be available on our website shortly.

We are still waiting for a decision from Wiltshire Council on whether a Strategic Environmental Assessment is required for our potential sites prior to formal consultation and submission. This remains a critical dependency and continues to make the timing of delivery of the new Neighbourhood Plan uncertain.

The government has now withdrawn grant funding for Neighbourhood Planning. We have until now been able to offset the cost of the technical consultancy support needed to develop Neighbourhood Plans. The Steering Group considers it essential to complete our Neighbourhood Plan to extend our protection from speculative applications while Wiltshire's housing supply stays well below the five-year requirement. Although much of the work is done by Steering Group members, the assurance and production of the technical planning documents by consultants is essential to the plan's acceptability and ultimate success. The Parish Council substantially contributed to the costs of the successful 2021 Plan. The PC will review the current financial position and estimated cost of completion of the Plan at its next meeting where we shall seek commitment to continue with the new Neighbourhood Plan to be completed in 2026.

We continue to examine and compare details and draft plans for the three housing sites offered for allocation, taking into consideration their sustainability, deliverability, and suitability so we can recommend the right allocation. However, as reported last month, this work cannot be completed until the SEA screening decision is known as premature work may prove to be nugatory and lead to unnecessary expenditure.

A meeting with the Chair of the School Governors and Head Teacher is planned to discuss the response from Wiltshire Council concerning draft proposals to improve access and provide additional parking facilities. The proposals are in response to residents' requests to ease traffic congestion and hazards at school drop off and pick up, and to enable safer pedestrian access to the school.

***Roy F Hamilton-Lambley, Chairman Neighbourhood Steering Group***

## Crudwell Ladies

Our August meeting occurred during the very hot weather so a very short walk around Malmesbury was enough for us then on to the Bell Hotel for a lovely cream tea in cool surroundings. Thank you to all the drivers who gave lifts, they were much appreciated.

We are back to Crudwell Village Hall for our meeting on **Wednesday, 10<sup>th</sup> September** for an evening with professional storyteller and magician Nick Brunger. "Tricks of the Mind" will be an entertaining evening with lots of magic and laughter. Non-members are warmly invited to attend for just £3 including coffee and biscuits.

All evening meetings start at 7pm with a 7.15pm start in Crudwell Village Hall. Our membership is not restricted to ladies living in Crudwell and members are very welcome to bring along a guest.

Crudwell Ladies also meet in the Wheatsheaf every 4th Wednesday of each month from 10.30am through to noon. Our next get together will be on 24 September .

*Please contact either Judy Paginton – Treasurer on 01666 577370 or Margaret English – (Newsletter Secretary) on [margaretenglish261@btinternet.com](mailto:margaretenglish261@btinternet.com) or 01666 577572 for more details.*

## Coffee & Chat

All locals, visitors and friends are most welcome to join our monthly coffee morning in Crudwell Church on **Wednesday 10 September** between 10.30 and 12 noon. Escape the weather to have refreshments and a chance in the raffle. Funds raised sustain the churchyard and church building maintenance. *Contact Rosemary Williams for further information on 01666 575073.*

# Join us @ Café Church

## First Saturday of the month

Coffee & 11am – 12.30pm  
Lovely Snacks Hankerton Church



## Crudwell Ladies Lunch Club

The Lunch Club outing on Monday, 18<sup>th</sup> August was to Castle Combe for a very enjoyable afternoon tea; there was so much lovely food that we all came home with boxes of goodies. We also learnt about the filming of 'War Horse' in the village and several other films and saw from photos how Castle Combe is changed to look like the correct period.

We are back to the **Rectory Hotel** on **Monday 15 September** when we will hear a very interesting talk about how our brains work (no rude comments please). We will be served a very tasty two-course meal in the conservatory, which is lovely when the windows and doors are open on to the garden.

*Contact Maureen Stephens on 07552 233293 for more details.*

## North Wilts Flower Club

On **17 September** we have our short annual AGM followed by Andrew Tolman and his talk "Off the Beaten Track". Then on 19 November (hard to think about) we have our Open Meeting called "Myths, Mince and Merriment". This year it's Katherine Kear. A good time is usually guaranteed!

We are a group of people who love flowers, some are florists, but many are not. So do join us. There is plenty of parking and free tea/coffee and cake at the end. Remember your first visit is free so do come along.

*Cathy Carroll 07703299277 carollcath@aol.com*

## Badminton

Crudwell Badminton Club welcomes players of all abilities to its Monday evening sessions at the Village Hall. Don't worry if you've never played before – we are happy to teach! If you'd like to join us for an evening free of charge, email [hilarywarner62@gmail.com](mailto:hilarywarner62@gmail.com).

## Tai Chi

Thanks to the fans in the Village Hall, we have managed to keep very cool during the recent hot weather. Everyone is welcome to attend the gentle Tuesday sessions 11.30 – 12.30. It costs just **£7** for an hour on a pay as you attend basis.

For further information, please contact either:

*Carmel Straughan on 577502 or Margaret English on 577572.*



## Crudwell Playgroup

Hello everyone,

Welcome back to a brand-new year at Crudwell Pre-School. We are excited to welcome all the children back plus some new children who will be joining us. We will also be welcoming some puppies to Pre-School; these are just for a visit not for us to rehome!

This month we have got so many exciting things planned such as a visit from a firefighter, hopefully a fire engine to and a tractor.

We are going to look after the many birds we have in our garden by filling up our home-made bird feeder and making new ones. A squirrel visited to and ate everything in one of bird feeders, we have chosen a name for it – Cyril!

Our register is now open for September starters and we have a few spaces left so please get in touch if you are interested in our Pre-School or have any questions.

For any more information, please contact me (Cathy) on 07986622191 or [info@crudwellpreschool.co.uk](mailto:info@crudwellpreschool.co.uk).

## Crudwell Village Hall

With summer now in our rear-view mirrors, it's time to update you on continuing plans for improving the outside space at the village hall.

By the time you read this, it's highly possible that new picnic tables and benches have been installed, including with space for those in wheelchairs. To aid accessibility, we're also investigating how to join our new path to the route that runs next to the children's playground and to the exterior of the hall itself.

Next, our incredibly helpful local horticulturists are planning the next phase of wildflower and tree planting further down the field. Again, we hope to enlist the aid of any and all parishioners willing to pick up a fork and join the effort. We're looking at later in the autumn for this next part of the project and will update you all more when the time comes.

Meanwhile, work continues on the general upkeep of the hall and its facilities for users. From new fire safety procedures, to new children's highchairs for parties, to new bins, there's lots happening and lots still to do. If you want to play a part, we're still (and always) interested in welcoming new members to the committee. Just let me know.

Phil Buxton, chair, Crudwell Village Hall Committee.

[chair@crudwellvillagehall.org](mailto:chair@crudwellvillagehall.org)



## Greetings from All Saints Church

Summer has finished and I hope you are refreshed and feel energetic for the rest of the year, as this is often the time of the year when new things begin. A new school term, with new heads at Crudwell and Oaksey schools and we wish them well. A new reception group will be starting at each of the primary schools. This time of the year brings new possibilities. For every new beginning there is an ending and when there is an end there is also a beginning, Life is full of circles; it never stops still.

As a Christian one thing I am certain about is that God remains the same. He is a foundation, a rock that we can hang onto. When Moses asked for God's name he replied "I AM". Although God was the God of Moses' forefathers He is also the God of the future a generation yet to exist.

The question is asked, Where do you meet God? It is always in the moment you are living in. At this particular moment, God is alongside us, walking beside us in our ups and downs.

Psalm 23, on which the song 'The Lord's my Shepherd' is based, tells of how the shepherd, the Lord, looks after us. He makes us rest, feeds, heals us and is beside us.

*'Though I walk through death's dark vale, Yet will I fear no ill;  
For Thou art with me, and Thy rod And staff me comfort still.'*

The rod and staff are used both to guide us and to fight against those who come against us. So while the world changes, root yourself in the wonderful assurance of the unchanging nature of the one whose name is 'I AM', the same yesterday, today and forever. The one who loves and cares about each of us.

*Lord God open our eyes to see you as we walk on our journey.*

*Lord God open our ears to hear you providing wisdom for our footsteps.*

*Lord God open our hearts to feel your love and know that we are never alone.*

*May the Lord Bless you and keep you, May his face shine upon you and bring you Peace. Amen*

Revd Sarah Wyman

### **Update on Bradenbrook Poppy Knitting**

*We have had a fantastic response so far. Could you bring the ones you have completed to Oaksey Shop or Church. We will sew on all the ones you have completed. In the meantime, could you please pause before making any more, just so that I can assess how many more, if any, are needed.*

*It is going so well and it will be an amazing symbol of remembrance created by all of you. I will keep in touch to let you know how it is going.*

*Thank you all again. Best wishes. Jackie*

# Malmesbury Primary Care Centre

Need a **little extra support** for your appointment? We're here for you.

At Malmesbury Primary Care Centre, we know that one size doesn't fit all. That's why we offer reasonable adjustments to remove or reduce any disadvantages related to someone's disability, and to help make healthcare experience easier and more accessible.

Whether you need:

- Extra time during your appointment
- Support with communication
- Easy-read documents
- Help accessing the building
- Or anything else to feel more comfortable...

Just let us know—either in advance or when you arrive. We're happy to talk through what might help and make the right adjustments for you.

Or visit the website and search for Reasonable Adjustments to complete the form. Everyone deserves care that works for them. Let's work together to make sure you feel supported every step of the way.



## CRUDWELL 2025 24 HOUR BIKE RIDE

Now that we have all recovered from this year's very successful event, and the fundraising results are in, we can report that over £15,000 was raised by the riders for their various chosen charities, and we hope to have raised just under £9,000 for the Village Hall and Recreation Ground. Such fantastic totals would not be achievable without the help of our many volunteers and supporters, so once again, a massive thank you.

**The date for next year's event will be the weekend of 20/21st June 2026, so please put it in your diaries!**

# MURCOTT FARM SHOP

OPEN 7 DAYS

MILK

FRESH BREAD

EGGS

COFFEE & HOT DRINKS

SOFT DRINKS

CAKES & PASTRIES

PIES

SAUSAGE ROLLS,

SCOTCH EGGS

FRESHLY MADE SALADS

MEAT

FISH

VEGETABLES

HAND MADE PASTA & SAUCES

PICKLES & CHUTNEYS

WINE & BEER

FREEZER MEALS

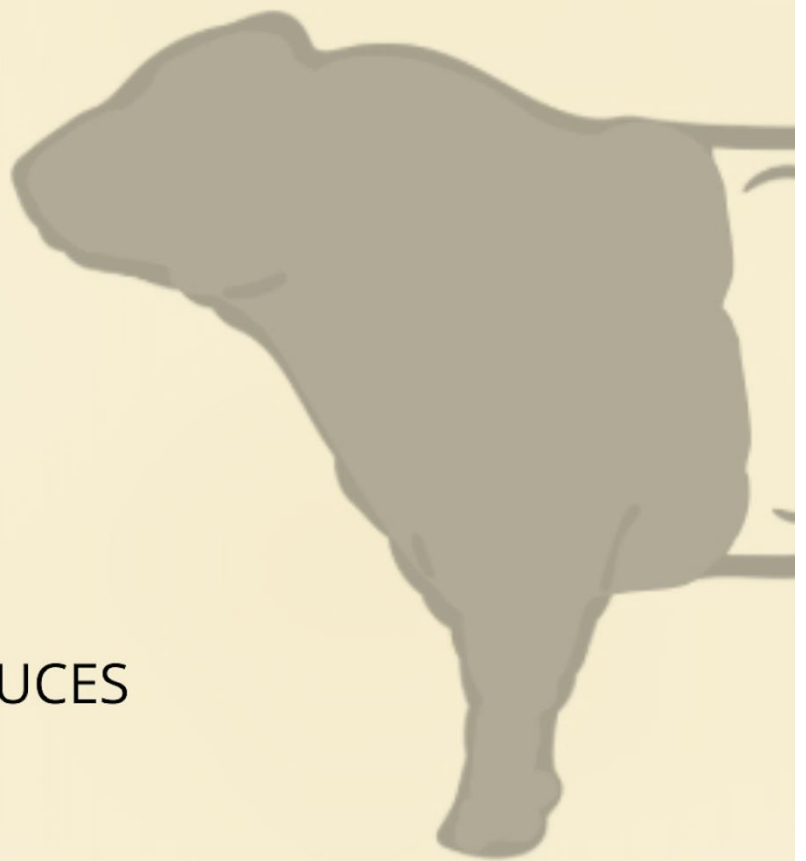
CHARCUTERIE

CHEESE

CHOCOLATE TREATS

FERMENTED FOODS

PET FOOD & MUCH MUCH MORE...



Crudwell Village Hall is a great venue for a variety of functions including children's parties, wedding receptions, meetings presentations, as well as activities and clubs.

There is a large fully equipped kitchen, refitted and refurbished facilities, a large hall with a capacity of 150 to 200 people, meeting room, large playing field and a children's playground adjacent to an outdoor fitness area. The hall has free Wi-Fi and drop-down projector screens.

For availability, bookings and more general information, head to our website or email [bookings@cvhrg.org.uk](mailto:bookings@cvhrg.org.uk)



## Crudwell Multi-Sports Facility

- The courts were built to play tennis, netball, basketball and 5/side football.
- There is **no charge** for the use of the courts.
- **Maintenance costs are funded entirely by donations, which can be made at The Wheatsheaf, Crudwell Post Office or online by bank transfer. A suggested donation could be £10/hour per court.**
- If you play regularly, please consider joining our **subscription scheme** for a donation of **just £5/month**.
- Help keep the courts in good condition especially **NO WHEELS ON THE COURTS!** Thank you.

**Crudwell Recreation Action Group (Crag)** part of the Crudwell Village Hall & Recreation Ground charity no.294177  
Email [bookings@cvhrg.org.uk](mailto:bookings@cvhrg.org.uk) for more information.

Netball for all takes place from 6pm to 7pm on Mondays. Phone **Debbie on 07880 606702** for more information.

On Tuesdays, it's tennis starting at around 5.00pm and we have a WhatsApp group to confirm if we have enough people to play. [anniebsmith@hotmail.co.uk](mailto:anniebsmith@hotmail.co.uk)

## **WE HAVE RELOCATED to a bigger and better premises.**

The same team, in a bigger premises, with more services to offer!

### **Where have we moved to?**

You can find us at Unit 4, Whitewalls Industrial Estate, Easton Grey, Malmesbury, SN16 0RD. Contact us as before on **01666 577 242** and [service@crudwellgarageltd.co.uk](mailto:service@crudwellgarageltd.co.uk)

**Can't get to us?** - Free collection and delivery available

We hope to welcome you to our new facility soon and thank you for your continued support.



# The Calm Clinic Malmesbury Solution Focused Hypnotherapy

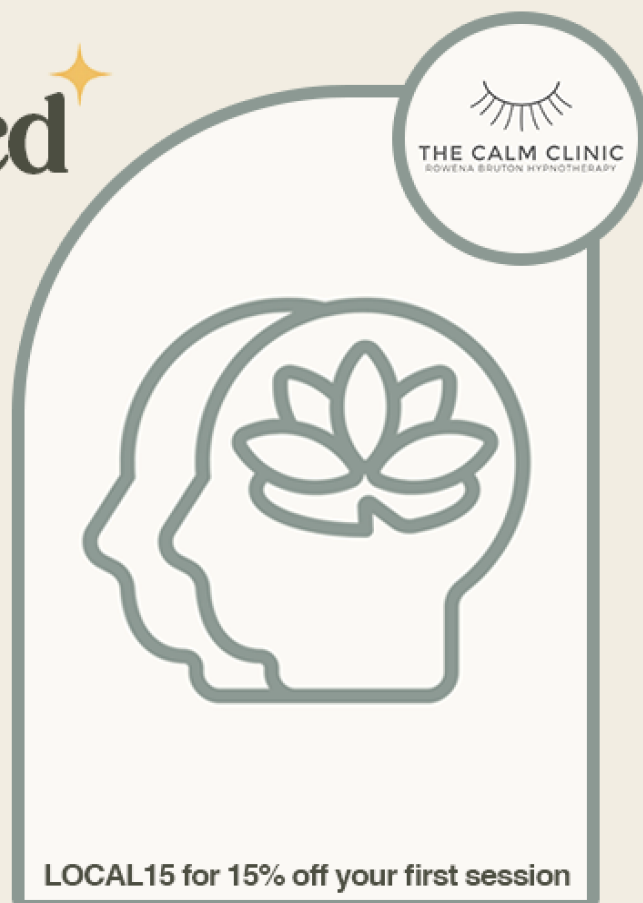
*Struggling with anxiety, stress,  
low confidence or feeling stuck?*

At The Calm Clinic, we use Solution Focused Hypnotherapy, which is a lovely combination of talking therapy and gentle hypnosis designed to retrain your brain, shift negative thinking, and help you build the calm, confident life you want.

- **Overcome anxiety and panic**
- **Manage stress and sleep better**
- **Build confidence and self-esteem**
- **Let go of fears and phobias**
- **Gain control of your thoughts**



[www.thecalmclinic.co.uk](http://www.thecalmclinic.co.uk) - [Info@thecalmclinic.co.uk](mailto:Info@thecalmclinic.co.uk)



## FRENCH/GERMAN LESSONS

Tuition given in either French or German, any level, beginners to A level, by experienced language teacher.

- **Oral practice in preparation for exams**
- **Adult conversation classes**
- **Help with grammar**
- **Individual or small group lessons**



For more information call Elizabeth on 07742 594322

Email [Liz.churchill@outlook.com](mailto:Liz.churchill@outlook.com)



### STABLES TO LET EASTCOURT, MALMESBURY

#### EXCELLENT FACILITIES INCLUDE:

- Stables within a large barn
- Quiet Location
- All Year Turn Out
- Tack Room & WC
- Outdoor School 30m x 50m with Lights
- All Weather Lunging Ring
- Horsewalker
- Wash Down Area
- Lorry Parking



CONTACT: Sara Palmer on 01666 577699 / 07974021006



# JAGGED EDGE DESIGN LTD

## ARCHITECTURAL DESIGN SPECIALISTS

*We specialise in bringing considered design to new build domestic houses, extensions and refurbishments.*

*We offer a comprehensive, professional service covering - Design, Planning, Building Regulations, and if you wish Project Management.*

Call Gary or Andrea Lawes on - 01285 841317  
or email [info@jaggededgedesign.co.uk](mailto:info@jaggededgedesign.co.uk)  
[www.jaggededgedesign.co.uk](http://www.jaggededgedesign.co.uk)



## Crudwell Honey

Prize winning local honey produced by bees foraging in and around Crudwell and Malmesbury. £6 for 340g (12oz) jar.

Please contact Tim Bullock: 07530 627062

[tim.bullock1797@gmail.com](mailto:tim.bullock1797@gmail.com).



Crudwell Honey



## T.M Installations

Plumbing and Heating Engineer

Reliable and Local – No job too small  
From leaky taps to full bathroom renovation  
Tiling service also available

Tom Murphy

Tel: 01666 577170 07766614606



## Talking Wines

Independent Wine Shop

Hundreds of wines available

3 Emmervale Court, Midland Rd  
Cirencester GL7 1P

01285 650 250 [Andrea@talkingwines.co.uk](mailto:Andrea@talkingwines.co.uk)

# TETBURY GOODS SHED

## A R T S C E N T R E

### SEPTEMBER HIGHLIGHTS AT TETBURY GOODS SHED



- Sept 11**      **Fitzwilliam String Quartet with Sarah Nicolls:** To mark the 50th anniversary of Shostakovich's death, the quartet joins forces with pianist Sarah Nicolls to perform the composer's only piano quintet, the premiere of which featured Shostakovich himself at the piano. Advance tickets £24. 7.30
- Sept 12**      **Fugue and Groove Jazz Trio:** Take a selection from the classical piano repertoire and add in generous helping of swing jazz and funky/Latin stylings and you have tonight's programme! Advance tickets £15. 7.30
- Sept 18**      **National Theatre Live - Inter Alia:** In a new play by Suzie Miller, Oscar-nominated Rosamund Pike (*Gone Girl*, *Saltburn*) is Jessica in the much-anticipated play from the team behind *Prima Facie*. Advance tickets £15. 7pm
- Sept 20**      **Tetbury Police Museum Family Day:** Come along to their "Crime Lab" at The Goods Shed to learn how the work of detectives has changed over time — there will be plenty of hands-on activities for the whole family! Free. 10-3pm
- Sept 24**      **Shed Talk:** Get an insider's view of the world of art and valuables from *Antiques Roadshow* expert Marc Allum — who'll also cast his expert eye over objects brought along by the audience. Advance tickets £12. 7.30pm.
- Sept 25**      **Film: The Salt Path:** In this now controversial film a couple lose their home and later discover the husband has been diagnosed with a terminal illness as they embark on a year-long coastal trek. Advance tickets £7.50. 7pm

**For more details of our other events including film, talks, exhibitions, and afternoon tea concerts and to book tickets visit our website:**

**[www.tetburygoodsshed.co.uk](http://www.tetburygoodsshed.co.uk)**



# What's on in Crudwell?

## September Village Calendar

All Saints Crudwell	Friends and Family	All Saints Crudwell	Sunday 7 September 10.00
	Morning Praise		Sunday 21 September 9.30
	Holy Communion		Sunday 28 September 11.00
Arty Moose <i>Art club for 5-11s</i>	Gillian 07843271517	Crudwell Village Hall	Wednesdays (term time only) 16.00 – 17.30
Coffee 'n' Chat	Rosemary Williams 01666 575073	All Saints Church	10 September 10.30 – 12 noon
Crudwell Badminton Club	hilarywarner62@gmail.com.	Crudwell Village Hall	Mondays 19.30 – 22.00
Crudwell Ladies	Judy Paginton 577370 Margaret English 577572	Crudwell Village Hall	10 September 19.00 for 19.15
		The Wheatsheaf	24 September 10.30
Crudwell Ladies Lunch Club	Maureen <a href="mailto:Stephens.07552.233293">Stephens.07552.233293</a>	The Rectory	15 September
Crudwell Parish Council Meeting	Roy F Hamilton-Lambley roy.lambley@gmail.com	Crudwell School	tbc
Crudwell Pre-School	Cathy 07986622191 info@crudwellpreschool.co.uk	Crudwell Village Hall	Mon/Weds/Thurs/Fri Term time only 9.00 – 15.00
Crudwell Scouts And Explorer Scouts	crudwellscouts@gmail.com	Crudwell Village Hall	Thursdays Scouts 19.00 – 21.00 Explorers 19.00-21.30
Crudwell Short Mat Bowls	Anita 07977566883	Crudwell Village Hall	Tuesdays 19.00 - 21.30 Thursday 15.30 – 17.30
Netball for All	Debbie Gregory 07880 606702	Multi- sports facility	Mondays 18.00 -19.00
The Arts Society Malmesbury <i>Lecture series</i>	<a href="mailto:info@theartsocietymalmesbury.org.uk">info@theartsocietymalmesbury.org.uk</a>	Crudwell Village Hall	No September meeting
North Wilts Flower Club	Cathy Carroll 07703299277 <a href="mailto:carrollcath@aol.com">carrollcath@aol.com</a>	Crudwell Village Hall	Wednesday 17 September 19.00
Pilates	<a href="mailto:caseystickland@hotmail.com">caseystickland@hotmail.com</a> 07900048952	Crudwell Village Hall	Tuesdays 9.30 – 10.30
Rugbytots <del>Over 50s</del> <i>Sport for 18 months to 6 years old</i>	Email Kimberley Robson northwestwilts@rugbytots.co.uk	Crudwell Village Hall	Saturdays 8.30 onwards various sessions
Tai Chi	Carmel Straughan 577502 Margaret English 577572.	Crudwell Village Hall	Tuesdays 11.30 - 12.30
Totally Tennis	Annie Smith anniebsmith@hotmail.co.uk	Multi- sports facility	Tuesdays 17.00

**Post Office** Monday and Tuesday 2.00pm - 5.30pm, Wednesday 9.00am-12.30pm  
Collection time 4.45 pm Wednesday **12.15** Contact 01666 577201.

**Mobile Library** 11.10-11.45 am The ~~Dawneys~~, Crudwell Friday 26 September

**Defibrillator locations: Village Hall (Code C123X) and Wheatsheaf Inn (C159X) BT telephone box, Eastcourt**